

1895

PRICE LIST AND CATALOGUE A

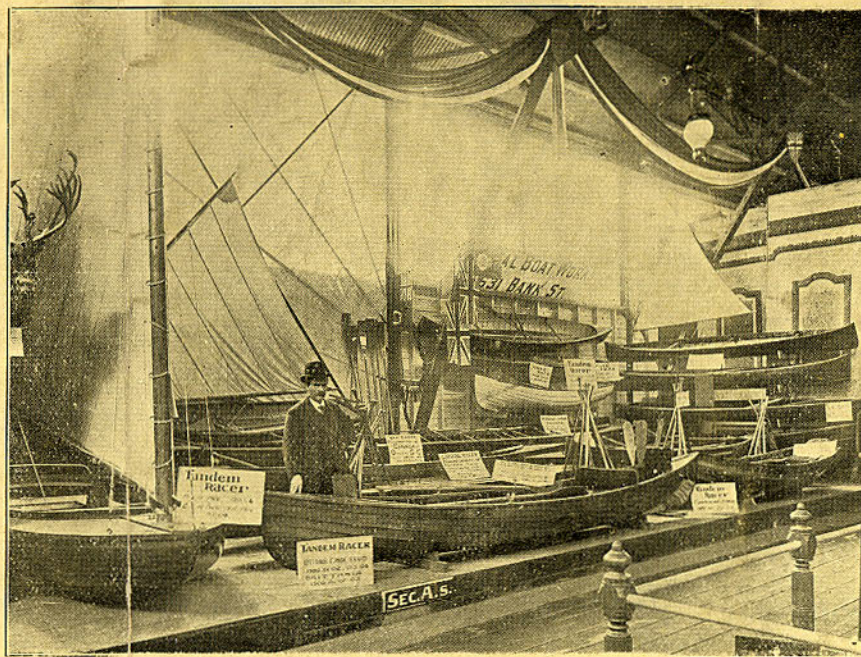
1910

# THE CAPITAL BOAT AND CANOE WORKS

THE FOLLOWING CANOE CLUBS USE OUR RACING CANOES:



Chataguay Canoe Club  
 Britannia's Boat Club  
 New Edinboro C. Club  
 Grand Trunk Boat Club  
 Lachine Canoe Club  
 Buffalo Canoe Club, N. Y.  
 Toronto Canoe Club  
 St. Roses Canoe Club  
 Carleton Place C. Club  
 St. John's Y. Club  
 Narragansette C. Club  
 Pittsburg Canoe Club  
 Providence R. Club  
 Samoset C. Club, Mass.



Wabewawa C. C. Boston, Mass.  
 Ottawa Canoe Club  
 Rideau Canoe Club  
 St. Lambert Canoe Club  
 St. Stephens Canoe Club  
 Winnipeg Canoe Club  
 Longueil Boat Club  
 Medford B. Club Mass. (U S.A.)  
 Smith's Falls Canoe Club  
 Yonkers C. Club, Yonkers, N. Y.  
 Lawrence C.C., Lawrence Mass.  
 Cartierville Canoe Club.



FAST GASOLINE LAUNCHES.

LUMBERMEN'S DRIVING BOATS AND WINCH BOATS BUILT TO ORDER.

WORKS, 612-614 BANK ST., OTTAWA, ONT.,

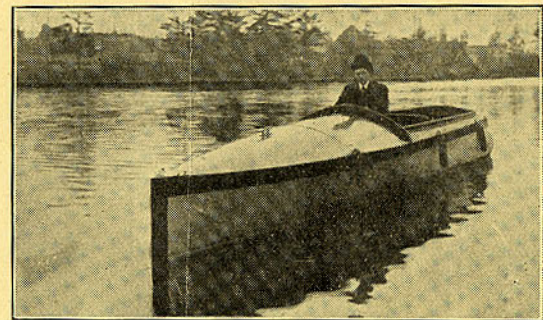
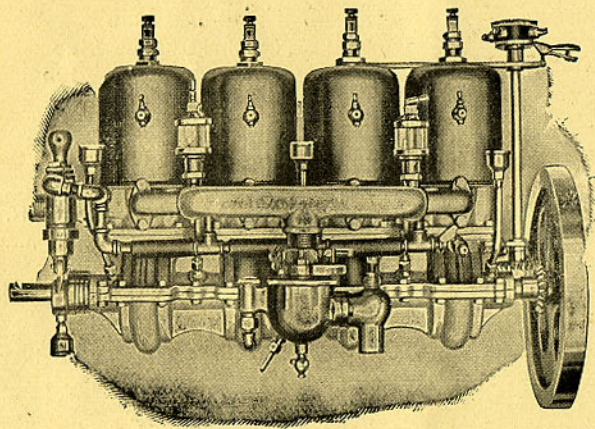
E. F. DEY & SON, Prop.

PHONE 136

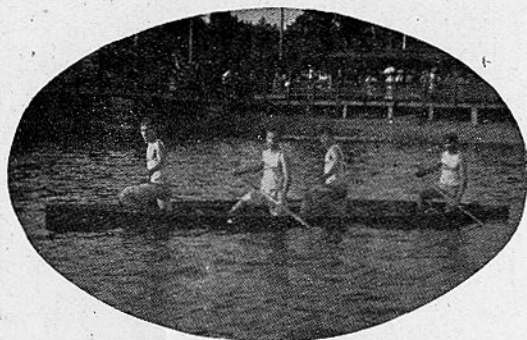
PATTISON PRINT.



SEND FOR CATALOGUE B.  
OF  
GASOLINE LAUNCHES and GASOLINE MOTORS



SEND TO-DAY FOR CATALOGUE B.



1910

## The Capital Boat and Canoe Works, 612 & 614 Bank St., Ottawa Ont.

Manufacturers of Racing Canoes, Cruising Canoes, War Canoes, Rowing and Sailing Skiffs,  
Speed and Cruising Launches, Motor Canoes and Motor Skiffs, Rowing and Sailing Dinghys.

---

### INTRODUCTION.

We take great pleasure in presenting our 12th annual catalogue of the CAPITAL BOATS & CANOES and wish to announce that we have installed machinery of the latest type for the manufacture of Boats, Canoes & Motor Launches, and now have one of the finest factories in this line in the Dominion.

We do not claim to build the cheapest boats, canoes and launches, but our goods are unsurpassed in design, construction, reliability and satisfaction. We use the best material, employ skilled mechanics, and exercise great care and close attention to the many details of construction, and we would ask your careful consideration of our price list before purchasing elsewhere.

You are invited to visit our factory and inspect our work in process of manufacture.

2 1/8 / 5%  
for Canoes.  
\$3.00



## OUR TERMS.

All former Price Lists are CANCELLED. Cash, twenty five per cent. to accompany the order, balance when boat, launch or canoe is ready to ship. We deliver same in cars, steamer or afloat here, without any charge. Crating or burlapping charged extra. Prices subject to change without notice. Special orders require larger cash payments. We are not responsible for any special arrangements made with agents or jobbers. In ordering be careful to give all details of what you require.

If the testimony of our patrons, expressing satisfaction with our work, is wanted, as further evidence of the reliability and popularity of our craft, we can produce the strongest offered. We can build you the fastest racing craft afloat. And if you cannot find what you want in our catalogue, write us and we will be glad to answer any questions.

---

## FREIGHT, PACKING AND SHIPPING.

The question is one that largely enters into calculations as to cost, especially when the goods have to go a distance. All freight rates are based on a canoe, boat or crate that will go into a box car—we have put canoes and boats 20 to 21ft. into a box car, but it is not often that we can get one that will take more than 19ft. Any boat or canoe that will not go into a box car has to be shipped on a flat car and pay road rate.

The rate for single canoe or boat is four times first class rate, and on three canoes crated one over, the rate  $3\frac{1}{2}$  times first class rate. We cannot crate over three canoes or boats high as they will not go into a box car. Large canoes over 18 ft. will not go into a car if crated over two high.

---

## PACKING AND CRATING.

It costs from \$2 to \$5 extra to crate a single canoe. We pack in canvas when required to ship by express which costs from \$1 up extra. The express rate is three times ordinary rate, and the express companies will not always take a canoe or boat over 17ft. long. The U. S. express is four rates.

## No. 1 Single Capital Racer.

Length 16ft., Beam 30in.,  
Depth 12in., Weight  
45 to 50 lbs.

First C. C. A. 1900 to 1909  
without a defeat. Manitoba  
1906, '07, '08 and '09.



GEO. DAVIDSON, Champion of Canada 1905.

N. D. A. C. A. 1902.

A. C. A. 1904 and 1905.

E. D. A. C. 1907, 1908 and 1909.

### PRICE.

Varnished Butternut.....	\$58
“ Cedar.....	50
“ Basswood.....	45
Painted Cedar.....	45
“ Basswood.....	37

These prices include 1 single paddle.



MR. BROWNRIGG, Champion of Canada 1906.



MR. KELLY, Champion of Canada 1907.

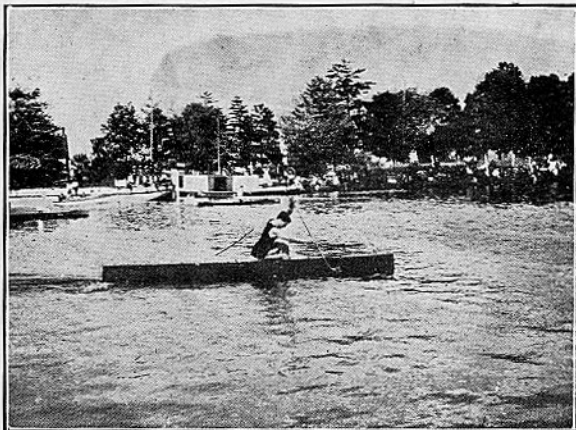
H. MERRILL, Champion of Canada, '08, '09.

## RACING CANOES.

No. 1.—SINGLE BLADE. Capital Racer, holder of ten Championships of Canada and four of America. This model has won over 200 firsts, Season of 1909; winner of more races than any model made in America; holder of the world's record  $\frac{1}{2}$  mile, and is used by the following Champions of Canada and America:

1900—Bert Cowan, Ottawa Canoe Club	....	....	....	....	....	Champion of Canada.
1902—Edgar Dey, Britannia Canoe Club	....	....	....	....	....	“
1902—Morley Neate, Ottawa Canoe Club	....	....	....	....	....	“ of America.
1903—Gordie Davidson, Lachine Canoe Club	....	....	....	....	....	“ of Canada.
1904—Horace Merrill, Ottawa Canoe Club	....	....	....	....	....	“
1904—Reg. Blomfield, Toronto Canoe Club	....	....	....	....	....	“ America
1905—Gordie Davidson, Lachine Canoe Club	....	....	....	....	....	“ of Canada.
1905—Edgar Dey, Britannia Canoe Club	....	....	....	....	....	“ of America.
1906—Oscar Brownrigg, Grand Trunk Boating Club	....	....	....	....	....	“ of Canada
1907—Geo. Kelly,	....	....	....	....	....	“
1908—Horace Merrill, New Edinburgh Canoe Club	....	....	....	....	....	“
1909—Horace Merrill	....	....	....	....	....	“
1909—Chas. Riddy, Toronto Canoe Club	....	....	....	....	....	of Western Canada.

Toronto Canoe Club is purchasing a 1910 Model War Canoe, Capital Racer.



HORACE MERRILL

Champion of America, Champion of Canada 1904-08-09.

The Capital Boat Works, Ottawa.

Gentlemen :—Used your canoe at the Rideau, Ottawa, Britannia, Eastern Division and Toronto Regattas. Winning first at every regatta. Have used your canoe the last five years and believe it is the fastest model afloat. Have won the championship of Canada three times in one of your Racing Canoes.

It is used exclusively by the New Edinburghs the Mile Champions of Canada

Yours truly,

HORACE MERRILL.

We are offering for the season of 1910 The New Merrill Model Racing Single. Used exclusively by Horace Merrill season 1909. This canoe is a little faster than our stock canoe and is made in one grade only Varnished Cedar. Price \$55.00.



### No. 3 TANDEM—Capital Racer.

Length 16ft, Beam 30in, Depth 12in, 45 lbs.

WINNER :

C.C.A. 1900-01-02-03-04-05-06.—A.C.A. 1902-03-04-05.

Eastern Division A.C.A. 1906-07 08.—Manitoba 1906-07-08-09.

Ottawa 1900—1909.

Price—Varnished Butternut \$58.00. Varnished Cedar \$50.00.  
Var. Basswood \$45.00. Ptd. Cedar \$45.00. Ptd. Basswood \$38.00.

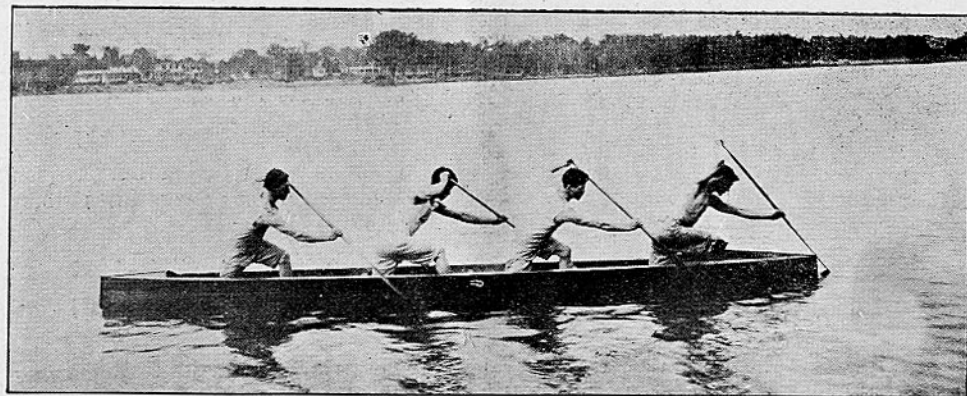


### No. 3. TANDEM—Capital Racer.

Length 20ft, Beam 31in, Depth 14, Weight 70 lbs.

This canoe holds the Worlds' Record for  $\frac{1}{2}$  mile made at Ottawa by the Britannia Canoe Club and is used by nearly every canoe club in Canada. In the Eastern States as seen on cover of Catalogue of clubs using our canoes it has been a winner in every case wherever used.

Price: Varnished Butternut \$75.00. Varnished Cedar \$68.00. Varnished Basswood \$55.00. Painted Cedar \$55.00. Painted Basswood \$48.00.



### No. 4 FOUR MAN—Capital Racer.





**WAR CANOE—Capital Racer.**

Winner Championship of Canada '04, '06, '07, '09. Holder World's Record  $\frac{1}{2}$  Mile and 1 Mile.

## WAR CANOES.

---

The Capital Boat Works build the lightest War Canoe on the market to-day, and since 1904 when our War Canoes were first built they have won nearly every race entered, winning the championship of Canada '04, '06, '07, '09.

Length, 30ft.; Beam, 40in.; Depth 19-20 in.; Weight, 175-190 lbs.

PRICE—Var. Butternut, \$225. Var. Cedar \$185. Var. Basswood \$160. Painted Basswood \$150.

---

### Record of This Model.

- 1904—Capital Racer. Winner of 12 first prizes and the championship of Canada. Won by the Ottawa canoe club.
- 1905—Capital Racer. Winner of 17 first prizes. The Britannia canoe club crew breaks the world's record.
- 1906—Capital Racer. Winner of 21 first prizes and the championship of Canada. Won by the Britannia canoe club.
- 1907—Capital Racer. Winner of 28 first prizes, and the championship of Canada. Won by the Carleton Place canoe club. Breaks the world's record, and it is still held by them.
- 1908—Winner of 29 first prizes.
- 1909— “ 27 first prizes, and the New Edinburghs won the mile ehampionship of Canada.





We build a canoe between the Cruising Canoe and the Racer calling it the SEMI-RACER or TORPEDO DECKED Fast cruiser.

This model of canoe has a little more dead rise than the ordinary cruising canoe, and is a lot lighter. The torpedo deck makes it a drier boat than the ordinary sheer canoe, and does not when paddling against a heavy wind offer the same resistance. Prices are for canoes decked 36in. bow and 20in. stern. Decks of butternut, Combings of Oaks, Maple or Red Birch. Decks, wales and thwarts of painted canoes oiled and varnished, the rest of the canoe painted in colors to suit.

#### Semi-Racer.

No.	LENGTH	BEAM	DEPTH	VAR. BUTTERNUT	VAR. CEDAR	VAR. BASSWOOD	PTD. CEDAR	PTD. BASSWOOD
5	15½	30	11½	\$57 00	\$45 00	\$36 00	\$36 00	\$31 00
6	16	31	12	\$59 00	\$50 00	\$40 00	\$40 00	\$35 00
7	16	32	12	\$61 00	\$50 00	\$42 00	\$42 00	\$37 00

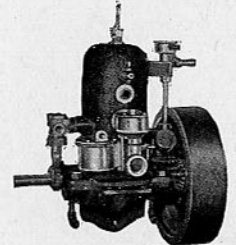
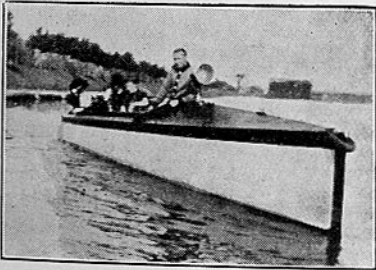
We can build this canoe Flush Batten, ribs 3 in. centres for \$10 extra. Longitude Rib we charge \$10 extra.

If you are going to take ladies and children in your canoe, have air tanks in the ends, they do not cost much and add to the pleasure of canoeing.

These Prices Include Two Single Paddles.

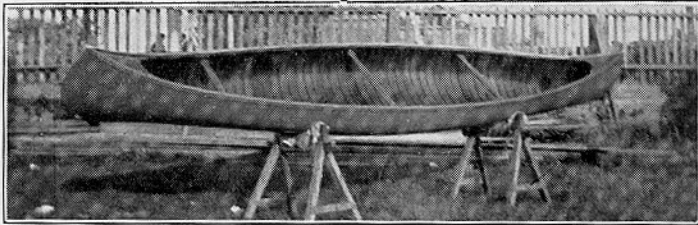
## WRITE FOR CATALOGUE B.

**GASOLINE LAUNCHES AND GASOLINE MOTORS.**



## CANVAS COVERED CANOES

We have gone into the building of Canvas Covered Canoes on a large scale and have as superintendent of this branch, an expert from one of the largest establishments in the United States and we are in a position to say that we can let you have the best that can be procured in this line of canoes. These canoes are fitted with thwarts the same as in our rib and batten but we can fit seats in them at a cost of \$1.00 each. Bottom Boards \$1.00. Keels \$2.00. These canoes are built on the same lines as our other canoes with light cedar ribs bent on iron covered moulds. These ribs are then covered with light narrow planking and then covered with a heavy canvas duck filled with a filler which makes it water proof this is then sand papered down smooth and given 2 coats of paint in colors to suit and then given 2 coats of the best boat varnish in the best grade. In the 2nd grade only one coat of varnished is used.



No.	LENGTH	BEAM	DEPTH	WEIGHT	GRADE A.	GRADE B.
21	16ft	30in.	12in.	42lbs	\$42	\$32
22	16	32	13	46	\$44	\$34
23	16	34	15	48	\$46	\$38
24	16	36	15	50	\$48	\$40

These prices include 2 Paddles to each Canoe.

### PROSPECTORS ATTENTION.

We are building 50 canvas covered Prospectors Canoes for the North Country work. Made stronger, lighter, steadier and deeper than our ordinary pleasure canoes. We guarantee these canoes to be 15 to 18 lbs lighter than any canvas covered canoe made also to carry a larger load and stand more rough water. By their extra depth than any canoe used in Northern Ontario or Québec.

We are offering these canoes at a prospectors price. Write at once for prices.



## OPEN CANOES.

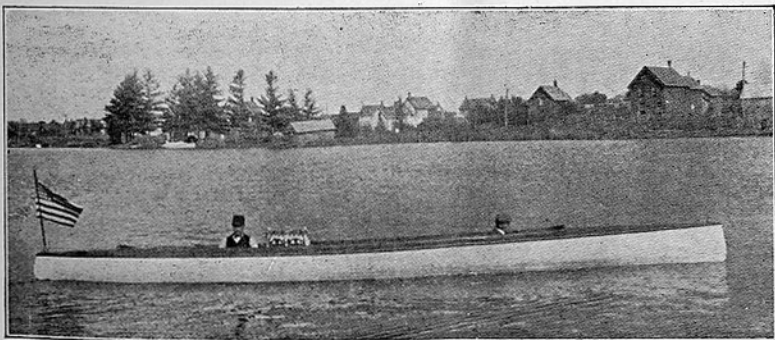
### Family and Pleasure Canoes.

Construction-Rib and Batten canoe are built of Basswood, Cedar, Butternut or Cypress boards, 3 to 5 board to a side, nailed to elm ribs 6in. centres, oak or elm stems; and a continuous strip of oiled Manilla is placed between the ribs and planking. The canoe is then taken from the moulds and battens fitted in between the ribs over the oiled Manilla making a water-tight job.

Varnished Canoes are copper fastened. Painted Canoes are iron fastened, unless otherwise ordered, for which an extra charge of \$2.00 on canoes up to No. 13, over this number \$3.00 and upwards will be charged. Any one of these canoes can be decked and finished up as a sailing canoe with sails, spars, centreboard and rudder, at a cost of \$30.00 to \$65.00 extra, but for a sailing canoe we would recommend No. 10 of the list. Prices are for open canoes decked 22 to 24in. bow and stern. Extra length decks up to 30in. charged 50 cents each deck. Extra depth \$1.00 per inch.

Two Paddles to each Canoe. Extra Paddles from \$1 to \$1.75 each. Burlapping \$1.25 extra.

No.	LENGTH	BEAM	DEPTH	WEIGHT	VAR CEDAR	VAR. BASSWOOD	PTD. CEDAR	PTD. BASSWOOD
8	12ft	33in.	12in.	40lbs	\$38	\$34	\$34	\$28
9	14	34	13	45	\$40	\$36	\$36	\$29
10	15½	31	12	50	\$43	\$37	\$37	\$29
11	16	30	12	50	\$43	\$37	\$37	\$29
12	16	31	12	50	\$43	\$37	\$37	\$29
13	16	32	13	55	\$44	\$38	\$38	\$30
14	16½	34	14	60	\$46	\$40	\$40	\$30
15	16½	36	15	65	\$50	\$44	\$44	\$36
16	17	40	16	70	\$52	\$46	\$46	\$38
17	18	40	17	75	\$61	\$56	\$56	\$46
18	18	42	18	85	\$64	\$58	\$58	\$48
19	19	40	19	105	\$65	\$59	\$59	\$50
20	20	42	20	115	\$70	\$65	\$65	\$54

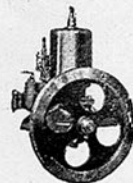


Built of Var. Butternut up to No. 15, \$10 extra but only to order.

We can build these canoes with heavier keelsons, planking, bilge and outside keels, to order, at a small additional cost.

**Write for Catalogue B.**

**Motor Canoes and Small Canoe Motors.**



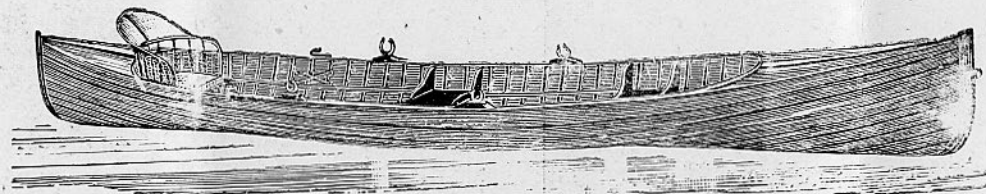
## FISHING BOATS.

No. 43—This boat is 16ft. long, 40 inches beam, 14 inches deep. Sides  $\frac{3}{4}$  of an inch thick. Bottoms  $\frac{3}{4}$  of pine. The sides are built of 2 or 3 boards lapstreak. The bottom is flat with a rocker up to bow and stern of  $2\frac{1}{2}$  inches. These boats are a nice light easy boat to row or paddle and for deer hunting and fishing are better than a canoe. They are painted two coats of good lead paint. Price, with 1 pair pin oars and 1 paddle, \$20.

---

## PLEASURE BOATS and SKIFFS.

We build these boats in several grades to suit the requirements of the general public. A costly boat such as our Smooth Built is not any more serviceable to the summer visitor on the inland lakes than a grade "B" would be, and costs considerably more, nor would it be any better than a grade "C" boat for the duck or deer hunter on his annual trip in the fall, so that we would advise parties when buying to get the boat to suit the work to which they will put it. If you want something in the boat line that you would be proud to shew to your friends, a nice, light, easy rowing craft, a safe, staunch, natty, first-class boat in every particular, then we would advise you to get our Smooth Built or grade "A". The Smooth Built boat has this advantage over the Lapstreak: Each and every plank lies snug and tight over the ribs and the chances of splitting the planks on rocks or snags are less than in the Lapstreak for in the Lapstreak at every lap there is a space between the ribs and the planks of  $\frac{1}{4}$  of an inch. The advantage is thus easily seen.





## GRADES.

Special-Construction, Smooth Built inside and out. Planking, selected cedar 5-16 thick. Ribs  $\frac{1}{2}$  round elm, spaced 3in. centres copper fastened. N.P. fittings. Backboards to end seats. Seats of selected butternut or ash. Sheer streak of butternut or ash. Inwales and gunwales of oak, red birch, or cherry. Deeked 3ft bow and 2ft stern, of butternut, red birch, or ash. Spoon oars. Oiled and varnished two coats of the best boat varnish.

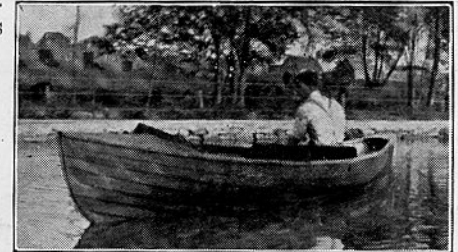
Grade "A"—The material, finish, and fittings in this grade is the same as in our special, the difference is in the construction. This grade boats are lapstreak in place of smooth built.

Grade "B"—Lapstreak-construction, clear cedar planking. Ribs elm spaced 6in. centres, copper fastened medium length decks of cedar or pine, cedar or spruce seats, gunwales and inwales of ash or elm. 1 pr of spoon and 1 pr of pin oars to boats over 16 ft. Backboards to bow and stern seats. Iron fittings. Oiled and varnished 2 coats of the best boat varnish.

Grade "C"—Lapstreak construction, good cedar planking iron or tin nails, cedar, spruce or whitewood seats, breasthooks and wales of elm or spruce 2 pr. of pin oars to boats over 16ft. Painted 3 coats inside and out except seats and wales these to be varnished. Rudders are furnished to all grades.

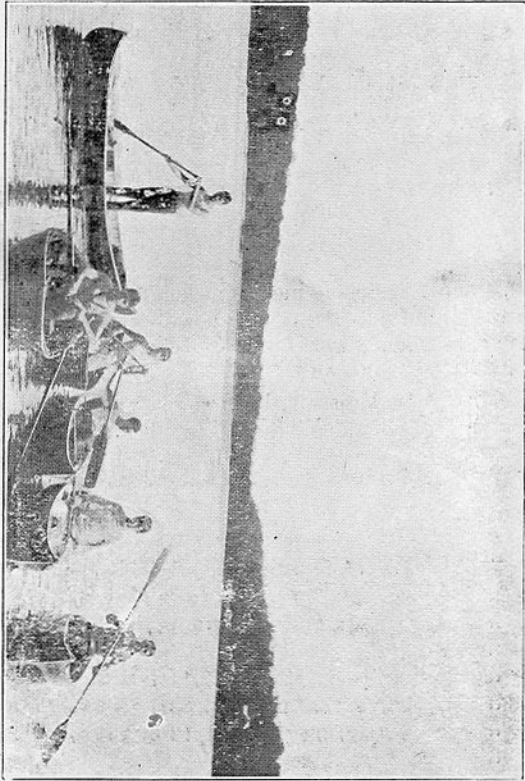
## PRICES.

No.	LENGTH	BEAM	DEPTH	SPECIAL	A	B	C	SEATING	OARS, ETC.
25	12	34	13 $\frac{1}{2}$	\$40	\$35	\$30	\$26	3 seats	1 pr. oars
26	14	34	13 $\frac{1}{2}$	42	37	32	28	3 "	1 " "
27	15	38	14	44	38	34	30	3 "	1 " "
28	16	38	14	49	44	39	35	3 "	1 " "
29	16	40	14	51	48	42	37	4 "	2 " "
30	17	38	14	53	50	45	39	4 "	2 " "
31	17	40	14	54	51	46	41	4 "	2 " "
32	18	40	15	59	55	49	43	4 "	2 " "
33	19	40	15	63	59	52	43	5 "	2 " "
34	20	48	15	67	63	56	52	5 "	2 " "

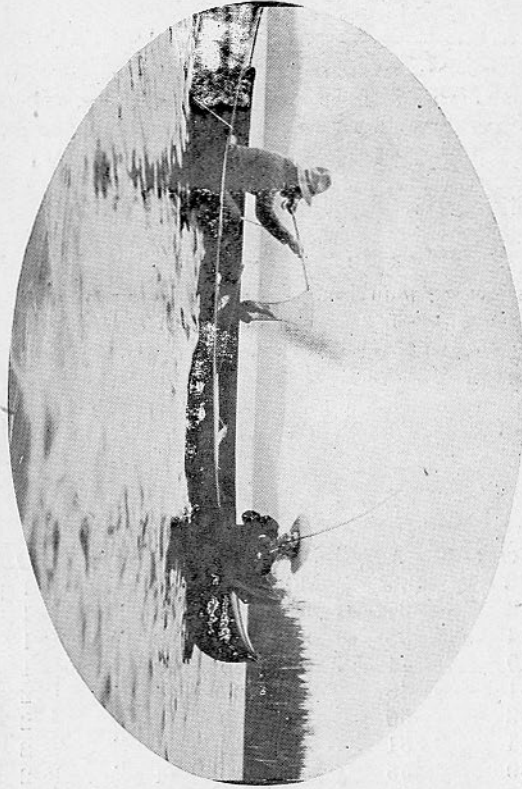


Motor Skiff

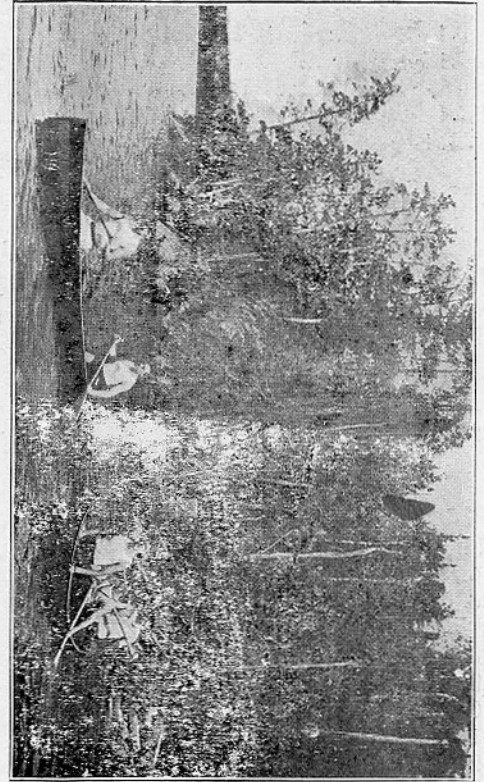
We Build Motor Skiffs. Send for Catalogue B.



— On Pleasure Bent —



— A Fishing Scene —



— A Hunting Scene. —

**A Group of Open Canoes Built by the Capital Boat Works.**

No. 12 and No. 13 Type.

The ordinary Dinghy is a light, strong, safe boat, and for use around summer resorts cannot be beaten.

We build this class of boats Lapstreak and Smoothbuilt.



ROWING DINGHY.

We are building a nice fast sailing dinghy, decked in narrow strips blind nailed and varnished, but for hard usage we would recommend the canvas covered deck as it does not shrink or swell with the action of the weather. Prices include 1 pair oars, steel centreboard and box, steel rudder. These boats are built of cedar or cypress planking, oak or elm ribs spaced 6in centres. The Smoothbuilt are constructed on the same plan as our Rib and Batten canoes and the Lapstreak the same as the Lapstreak skiffs.

NO.	LENGTH	BEAM	Smoothbuilt		Lapstreak	
			VAR. CEDAR	PTD. CEDAR	VAR. CEDAR	PTD. CEDAR
40	12in.	54in.	\$ 95	\$ 80	\$ 80	\$ 75
41	14	60	105	90	90	85
42	16	70	130	110	110	105

SAILS EXTRA : Drill 75ft \$15. 100ft. \$20. 140ft \$25.

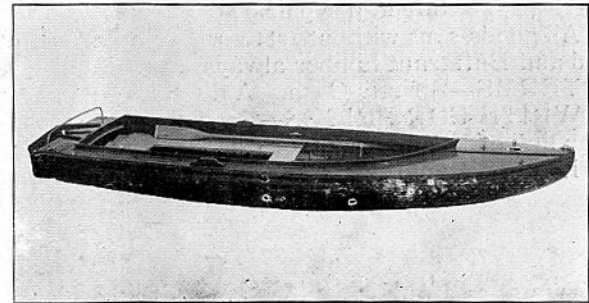
Si k, 75ft. \$20. 100ft. \$25. 140ft. \$30.

#### Lapstreak

#### Smoothbuilt

NO.	LTH.	BEAM	DEPTH	V. CED.	PTD. CED.	VAR. CED.	PTD. CED.
35	9ft	44in.	14in.	\$34	\$29	\$39	\$34
36	10	44	14	35	30	40	35
37	12	46	15	38	33	43	36
38	13	46	15	40	35	45	40
39	14	46	15	43	38	50	45
39b	16	42	15	47	43	55	50

Fittings for each boat, 1 pair of pin oars, and for No.'s 37, 38 and 39 a rudder is included. We have installed a small motor in a few of these boats to be used as a motor tender to sailing and steam yachts, and they have given good satisfaction. We can also fit them with a centreboard and sail to be used as a small sailing Dinghy. A 2hp motor would cost installed with everything complete ready to run, \$63. A 20ft. sail, centreboard and all cleats would cost \$23.



SAILING DINGHY.



## PADDLES.

Maples, Ash, Spruce, Red Pine or Cedar	Common	.....	\$ 1.00
	Selected	.....	1.65
Birdseye Maple, Curly Maple, Red Birch, Walnut, Oak, Cherry and Sycamore	each	.....	2.00
Racing Paddles, large size	.....	.....	1.75
War Canoe Paddles per dozen	.....	.....	13.80

## DOUBLE BLADE PADDLES.

Straight jointed	.....	\$3.50	Spoon jointed	.....	\$4.00	8 to 9ft. long, add 10 cents for each ½ft. of length over 9ft.
------------------	-------	--------	---------------	-------	--------	--

## OARS.

Straight blade, leathered and tipped	} 7½ per pair	.....	\$2.50	8 feet per pair	.....	\$2.75
		.....	3.00	9 "	.....	3.25
Pin Oar, pin attached to oar	} 7½ per pair	.....	\$2.50	8½ feet per pair	.....	\$2.75
		.....	2.75	9 "	.....	3.00

Without pins, deduct 25 cents per pair.

## SPOON OARS LEATHERED AND TIPPED.

7½ feet, per pair	.....	\$3.00	8½ feet, per pair	.....	\$3.75
8 feet, per pair	.....	3.50	9 feet per pair	.....	4.00

All goods sent without crate or burlap unless otherwise ordered; crates from \$2.00 and upwards, burlap \$1.00. Cedar, Basswood and Butternut lumber always wanted and taken as cash.

TERMS—Strictly Cash. A deposit of 25 per cent. must accompany order. Goods will not be forwarded until fully paid for.  
 WRITE FOR PRICES—Special size canoes for Prospectors and Surveyors built to order. Batwing sails made to order. A cheap line of Fishing boats to order. Odd size Canoes 10x28 in., 12x24, 14x40, 13x36, 19x49, 17x42 made to order.

If there is anything you require not shown in this Catalogue, write us and we shall be happy to give full particulars.

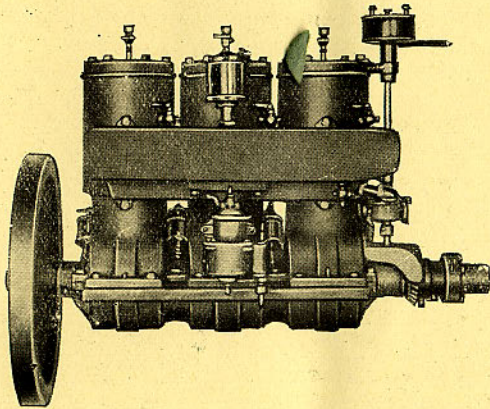
## THE CAPITAL BOAT WORKS.

Don't make a mistake. Our address is 612 and 614 BANK ST., OTTAWA. Our Phone No. is 136.

WE HAVE NO CONNECTION WITH ANY OTHER FIRM IN OTTAWA.

**WANTED.**

**Second hand Gasoline Motors. Condition no Object.**



**Little Giant**  
GASOLINE MOTORS

**SEND FOR CATALOGUE B.**

**OF**

**GASOLINE MOTORS, AUTO TOPS, REVERSE GEARS, ETC.**



CARLETON PLACE CANOE CLUB

1907

Champions of Canada half mile

1907



1907

Champions of Canada one mile

1907

IN THEIR CAPITAL WAR CANOE