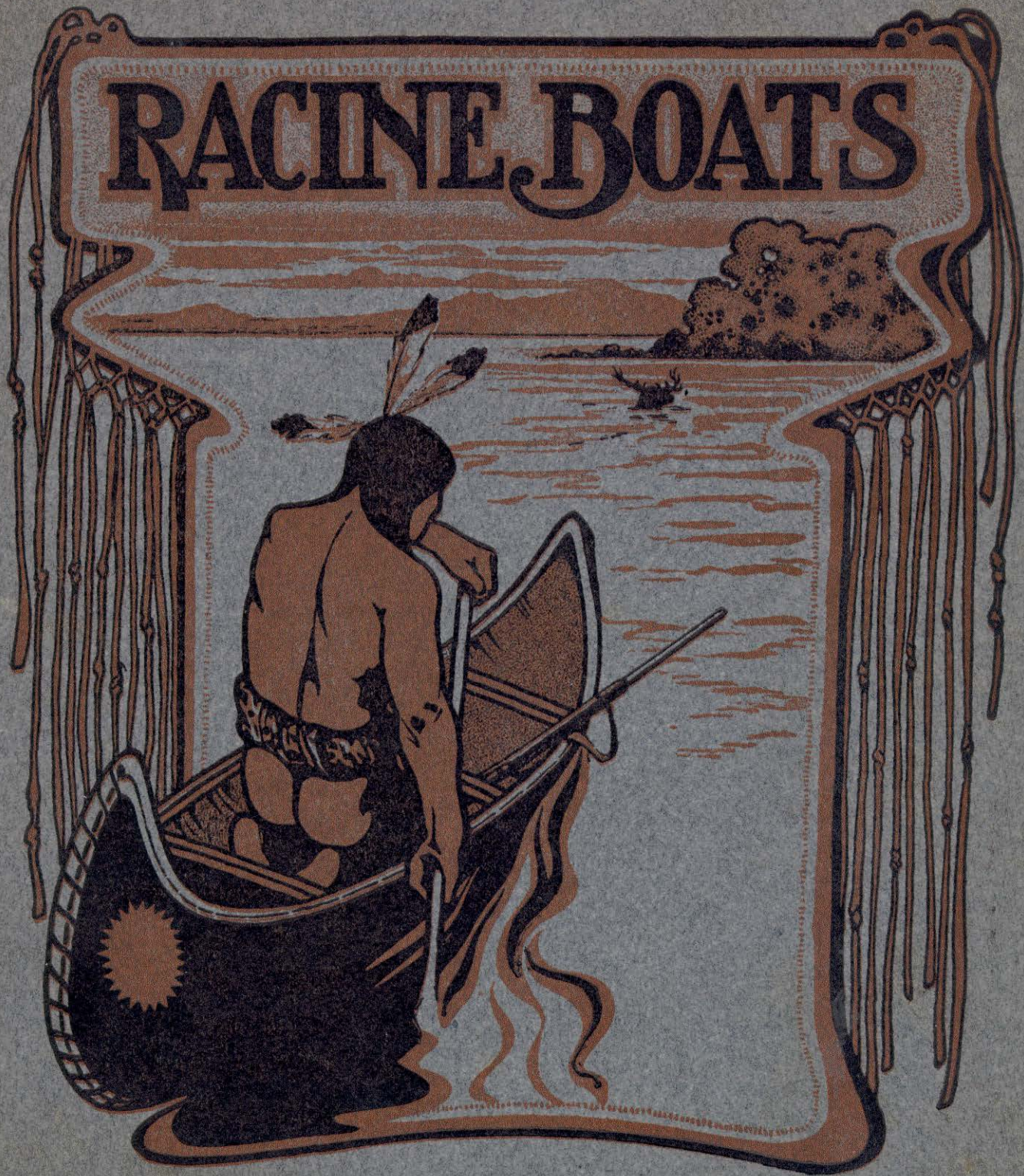


# RACINE BOATS

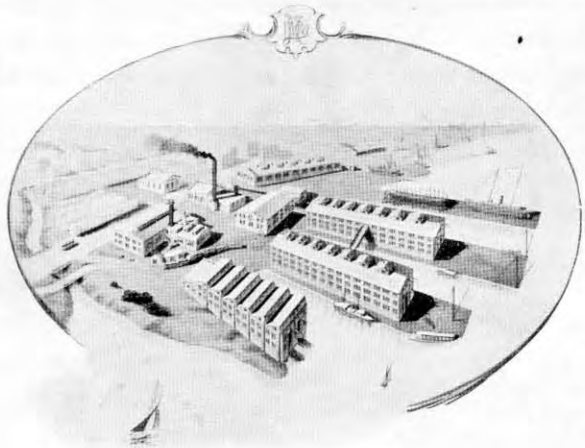


Copyrighted  
1905  
Racine Boat Manufacturing Co.

ILLUSTRATED CATALOGUE OF

# Row Boats, Hunting Boats Sail Boats and Canoes

Longdistance  
Telephone 230



Cable Address  
"Boatracine"

## Racine Boat Manufacturing Co.

MAIN OFFICE AND WORKS:

Muskegon, Michigan, U. S. A.

BRANCH OFFICES:

Racine, Wisconsin. New York: 169 Broadway. Boston: 16 Columbus Ave.  
Philadelphia: 38 Delaware Ave., Camden. Chicago: 1321 Michigan Ave.

DISTRIBUTING AGENCIES:

Washington, D. C.; Savannah, Ga.; Buffalo, N. Y.; San Francisco, Cal.; Portland, Ore.; Seattle  
and Spokane, Wash.; New Orleans, La.; Jacksonville, Fla.; Norfolk, Va.; Minneapolis and St.  
Paul, Minn.; Sault Ste. Marie, Mich.; Milwaukee and Green Bay, Wis.; Mexico City, Mexico.

RACINE BOAT MFG. CO.  
MUSKEGON, MICH.

TERMS OF SALE

THE prices given in this catalog are *Net* and take precedence over all others. We issue no discount sheet. Our terms are strictly net *Cash* in every case and we require a deposit of 25 per cent with the order and balance when Boat is ready to ship. All Boats are carefully packed for shipment, the varnished Boats being *wrapped in paper, burlapped and crated*; the painted Boats are *wrapped in paper and crated securely* and are delivered on board Steamers or Cars or afloat here *Free of Charge*, and are guaranteed to be free from leaks and first-class in every way.

FREIGHT RATES TO PRINCIPAL CITIES

SUBJECT TO TARIFF CHANGES ON CANOES AND ROW BOATS LOADED IN  
BOX CARS—RATE PER 100 POUNDS

Ashland, Wis., . . . . .	\$ 3.08	Mobile, Ala., . . . . .	4.64
Atlanta, Ga., . . . . .	6.00	Nashville, Tenn. . . . .	3.24
Boston, Mass., . . . . .	3.16	New Orleans, La., . . . . .	4.64
Buffalo, N. Y., . . . . .	1.78	New York, N. Y., . . . . .	2.88
Baltimore, Md., . . . . .	2.76	Norfolk, Va., . . . . .	2.76
Burlington, Vt., . . . . .	3.16	Omaha, Neb., . . . . .	4.46
Charleston, S. C., . . . . .	5.52	Philadelphia, Pa., . . . . .	2.80
Chicago, Ill., . . . . .	1.26	Pittsburg, Pa., . . . . .	1.78
Cleveland, O., . . . . .	1.64	Portland, Me. . . . .	3.16
Cincinnati, O., . . . . .	1.72	Providence, R. I. . . . .	3.16
Des Moines, Ia., . . . . .	3.74	Raleigh, N. C., . . . . .	5.44
Denver, Colo., . . . . .	9.46	Richmond, Va., . . . . .	2.76
East St. Louis, Ill., . . . . .	1.80	St. Louis, Mo. . . . .	1.88
Fargo, N. D., . . . . .	5.94	San Francisco, Cal. )	12.00
Galveston, Tex., . . . . .	7.54	and all Pacific Coast }	
Helena, Mont., . . . . .	13.12	Seattle, Wash., . . . . .	
Indianapolis, Ind., . . . . .	1.64	Santa Fe, N. M., . . . . .	10.28
Jacksonville, Fla., . . . . .	5.52	Toronto, Can., . . . . .	1.78
Kansas City, Mo., . . . . .	4.46	Vicksburg, Miss., . . . . .	4.64
Louisville, Ky., . . . . .	1.76	Washington, D. C., . . . . .	2.76
Milwaukee, Wis., . . . . .	1.26	Wheeling, W. Va., . . . . .	1.78
Minneapolis, Minn., . . . . .	3.12	Wichita, Kan., . . . . .	6.58

RACINE BOAT MFG. CO.  
MUSKEGON, MICH.

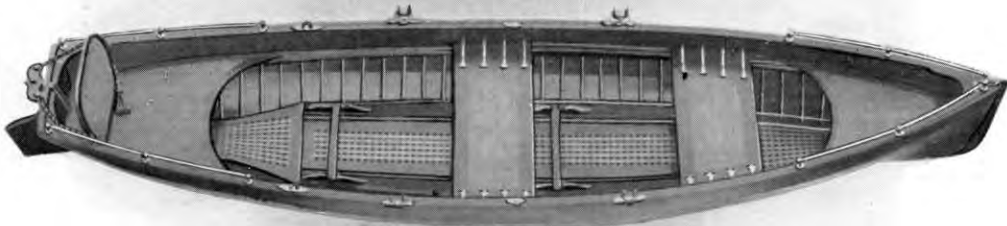


## ROW BOATS

**R**ACINE Row Boats have been before the public for twenty-two years and have become famous for their excellence of design, model, construction and finish. Thousands upon thousands have been shipped to all parts of the globe and as we turn out in this one department from ten to twelve boats per day, or 3000 to 3500 per year, some idea can be drawn of our facilities in this department where special attention is given to high grade work of an artistic nature, combining the least possible weight consistent with strength and durability, and experience has demonstrated that we can build a Spanish cedar single shell that will not weigh over twenty pounds. This department is equipped with special light machinery and tools, and is in charge of expert workmen who have made this line of boat building a study, both in England and this country, and the satisfactory work turned out by us in the past for different colleges and rowing clubs is evidence of our ability to supply the demand. We build single, double, four and eight oared shells and barges, gigs, working and practice boats, sliding seats, outriggers, sculls, etc., and carry in stock several hundred small boats ready for immediate delivery and can supply Boat Liveries, Clubs and Parks with a car load or two of livery boats promptly. It has been our privilege for years past to fit out the New York and Chicago parks and other large consumers, and we guarantee satisfaction. If you fail to find what you want in the following pages, write us as we are continually bringing out new designs from time to time, and have cuts, sketches and descriptions that can be mailed you promptly. We use nothing but the best material even in our low priced boats, and we employ nothing but skilled labor, consequently any boat purchased from us will meet your expectation. We row, sail and paddle ourselves, and the following pages tell their own story.



RACINE BOAT MFG. CO.  
MUSKEGON, MICH.



### SPECIAL PRINCESS

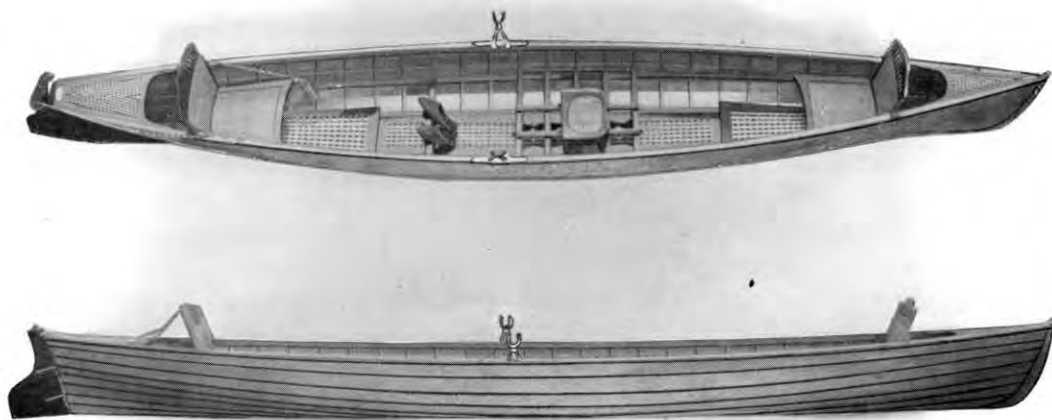
OUR Special Princess rowboat, as illustrated herewith, excels any craft ever put on the market for *beauty, graceful lines*, stability and easy rowing qualities, absolutely safe for family purposes and a good sea-going model. The general makeup and the high finish of this boat places it in a distinct class, which cannot be approached by the ordinary rowboats one is accustomed to see. We build this boat in three sizes, and the following brief specifications will give an idea of construction, finish, etc. Frame of clear white oak. Stem of hackmatack or mahogany. Stern of solid mahogany. Planking of clear cedar. Top strake, gunwales, fenders and fittings of solid mahogany. Copper fastened throughout, with the ribs riveted on copper burrs. All seats and lazy-back of solid mahogany, caned. Removable grating floor and platform of solid mahogany and maple. Adjustable mahogany foot braces. Solid mahogany rudder with fancy yoke and steering lines with tassels. The entire boat is finished, both inside and out, in the natural wood, with the best grade of marine varnish and rubbed down to a piano finish. Trimmings consist of seat hangers, stem band, painter eye, rudder hanger, fishpole holders, sheet rings, safety rowlocks, hand-rails on bow and stern, all of brass, nickel-plated and highly finished. It will be seen that the above specifications cover a first-class boat; in fact, there is nothing better.

Length	Beam	Depth		Depth Amidship	Shipping Wt., about	Price
		Forward	Depth Aft			
18 feet	44 inches	24 inches	21 inches	16 inches	200 lbs.	\$200.00
15 feet	42 inches	23 inches	20 inches	15 inches	150 lbs.	150.00
13 feet	40 inches	22 inches	19 inches	14 inches	120 lbs.	125.00

Our 13-foot Special Princess is fitted for one oarsman, with one pair finely finished spruce spoon or straight oars and one pair oarlocks. Our 15 and 18-foot Special Princess is fitted for two oarsmen, with two pair oars and two pair oarlocks.

Fancy awning and flagstaff fitted to this boat, with all nickel-plated trimmings, for \$15.00 extra.

RACINE BOAT MFG. CO.  
MUSKEGON, MICH.



### SPECIAL LADY GERTRUDE

THE illustration above is a fac-simile of our "Special Lady Gertrude," designed especially to meet the demands for an elegant, swift-rowing pleasure craft. From the cut it will be seen that she is fitted out as a "practice" boat and answers for a single scull with the addition of a coxswain and passenger seat. The sliding seat and shoes may be omitted and a regular rowing thwart finished in black walnut and caned, substituted. The finish of the "Special Lady Gertrude" is similar to our "Princess;" walnut is used in place of mahogany,

**SPECIFICATIONS** Length, 16 feet; beam, 3 feet; outrigger to 3 feet 9 inches; weight, complete, 125 pounds. Frame of selected white oak. Stem and transom of black walnut or hackmatack. Planking of clear cedar, all copper fastened. Ribs riveted throughout on copper burrs. Inlaid deck forward and aft of walnut and spruce. Seats and lazy-back of walnut, caned, as shown in cut. Removable grating floor board and platforms of walnut and maple. Walnut rudder with fancy yoke and lines. Patent sliding seat. Leather shoes. One pair nickel-plated folding outriggers and oarlocks. One pair finely finished eight-foot spruce sculls, leathered and coppered, Stem band and painter ring. Finished inside and out in the natural wood, with the best grade of marine varnish, rubbed down and polished to a fine finish. A beautiful, durable and effective outfit that cannot help but give satisfaction. Price, \$150.00

The same boat in a plain finish, that is: Oak frame, cedar planked, copper fastened, walnut trimmed, cedar seats. Natural finish throughout, nickel-plated trimmings, but no gratings, no caned seats. No high finish. Price, complete, with sliding seat, shoes, outrigger and sculls, \$85.00

RACINE BOAT MFG. CO.  
MUSKEGON, MICH.



## PRINCESS

THE cuts herewith show in a general way our Princess and whether in our "special" or Grade "A," is the handsomest Boat built and the favorite of our family, excelling all other Boats for family use. We call attention to the liberal depth, good beam, easy lines, fine entrance and clearance, good flat floor carried well forward and aft. Easy deadrise and good shoulders, making a very steady, safe and graceful boat. A person weighing 180 pounds can stand on the gunwale without taking water over the sides and a girl thirteen years of age can row this boat easily. Guaranteed to satisfy. Nothing better built.

**SPECIFICATIONS** Keel, stem, stern, gunwales and knees of selected white oak, all brass screw fastened. Planking of clear white cedar, lap streak, all copper fastened. Fenders, etc., of black walnut. Removable floor board, buttoned in, seats and interior finish of finely figured wood. Large seat in stern with lazy-back; large bow seat. Platform forward and aft. Adjustable foot braces, rudder with yoke. All trimmings of brass, nickel plated, and consist of stem band, painter ring, seat braces, rudder hangings, safety oarlocks. The entire boat is finished up very handsomely in the natural wood throughout with the best marine varnish. A very handsome and durable boat, built in three sizes.

Length	Beam	Depth Forward	Depth Aft	Depth Amidship	Shipping Wt. about	Price Grade A.
18 feet	44 inches	24 inches	21 inches	16 inches	200 lbs.	\$75.00
15 feet	42 inches	23 inches	20 inches	15 inches	150 lbs.	65.00
13 feet	40 inches	22 inches	19 inches	14 inches	120 lbs.	55.00

Our 18-foot "Princess" has three cross seats, besides large seats in bow and stern, and is fitted with two pair straight spruce oars. The 15-foot boat has two cross seats, and is fitted with two pair straight spruce oars. The 13-foot boat has one cross seat and is fitted with one pair straight spruce oars.





RACINE BOAT MFG. CO.  
MUSKEGON, MICH.



## LADY GERTRUDE

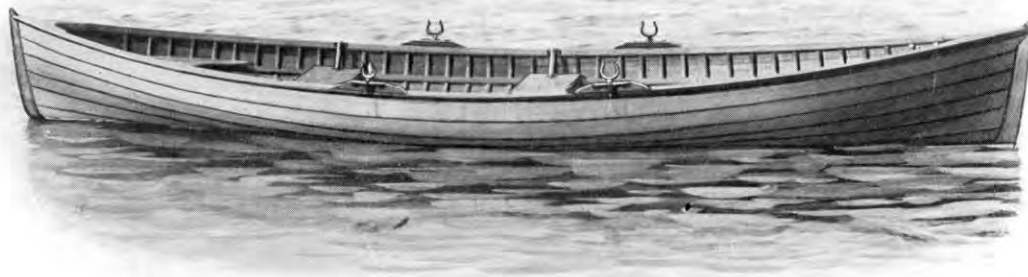
**T**HIS handsome little boat was designed to meet the demand for a light, easy-rowing and a safe boat for ladies' use. Unlike the so-called "ladies' gig," she is sharp at both ends, with straight stern post, on which a rudder is hung as shown. We fit her regularly with one pair of outriggers and oars, but have rigged several as double sculls and coxswain's seat, which have been found to give entire satisfaction as such for lightweight persons' use. Seated regularly as shown in cut, she is adapted to two persons, one oarsman with passenger in stern seat, and seat for grown child in bow. We also equip this model with the Kern patent roller sliding seat, and when so fitted is found to meet all requirements for those desiring a light, swift-rowing practice boat.

**FANCY GRADE** Length, 16 feet; beam, 36 inches, outriggered to 45 inches; depth forward, 19 inches; depth aft, 16 inches; depth amidship, 13 inches; weight, 125 pounds. Frame of oak. Planking cedar. Ribs riveted on copper burs. Walnut trimmings. Hand made gratings, cane seats. One pair folding outriggers and oarlocks. One pair 8-foot sculls, varnished, leathered and coppered. Rudder. High finish inside and out in the natural wood with best grade of marine varnish. Price complete, \$100.00 Shipping weight, 150 pounds.

**GRADE A** Same dimensions as given above. Frame of oak, planking of cedar, all copper fastened. Walnut trimmings. Brass, nickel-plated fittings. One pair folding outriggers and oarlocks. One pair 8-foot sculls, rudder and lazy-back. Nicely finished throughout in the natural wood with marine varnish. Price complete, \$65.00 A beautiful and graceful boat.

This boat can be fitted with patent sliding seat and shoes for \$15.00 extra.

RACINE BOAT MFG. CO.  
MUSKEGON, MICH.



## OUR SPORT

**T**HE half-tone cuts are an exact likeness of our popular double ender, which we have been building for years, and the large number in existence today and the increasing demand demonstrate that in "Our Sport" model we have a combination of easy-rowing qualities, comfort and stability that can not be surpassed. We build this boat in our best grade only, and it will satisfy the most fastidious oarsman.

**SPECIFICATIONS** The entire framework is of selected white oak, all carefully fastened together. Planking of cedar, copper fastened. Trimmings of black walnut. Fittings of brass, nickel-plated. Finished inside and out in the natural wood with the best grade of marine varnish. Straight spruce oars, varnished, leathered and coppered. Stem bands, painter ring, removable floor board. Adjustable foot braces. A very attractive and easy-running boat, built in two sizes and one grade.

Length	Beam	Depth Forward	Depth Amidship	Depth Aft.	Shipping Wt. about	Price
13 feet	40 inches	21 inches	14 inches	21 inches	120 lbs.	\$45.00
15 feet	42 inches	23 inches	14 inches	23 inches	140 lbs.	55.00

The 15-foot boats have one pair 8-foot and one pair 7-foot straight spruce oars and two pair oarlocks. The 13-foot boats have one pair 7-foot straight spruce oars and one pair oarlocks.



RACINE BOAT MFG. CO.  
MUSKEGON, MICH.



## ST. LAWRENCE SKIFF

**O**UR St. Lawrence Skiff as shown is the best seagoing model ever built for rough waters, its decks, coaming and good depth making it thoroughly seaworthy. It is a very popular model, especially among our eastern friends, and has been before the boating public too long to need any introduction. It will be seen at a glance that she has good stability and fine lines, making her a good safe carrier and an easy rowing and powerful boat.

Built in two sizes and one grade according to the following:

**SPECIFICATIONS** The entire framework constructed of clear, seasoned white oak, all brass screw fastened. Planking of clear white cedar, lap strake construction, copper fastened throughout. Fenders and trimmings of black walnut, making a very pleasing contrast. Decks of white cedar, with oak coaming and partner pieces. Lining strips and removable floor board, one bow seat, one stern seat, two rowing seats, adjustable foot braces, etc. All trimmings of polished brass and consist of stem bands, painter ring, seat braces, safety oarlocks. The entire boat is finished up very handsomely in the natural wood throughout with the best grade of marine varnish.

Length	Beam	Depth Forward	Depth Admidships	Depth Aft	Shipping Weight about	Price
16 feet	42 inches	24 inches	15 inches	24 inches	150 lbs.	\$70.00
18 feet	44 inches	25 inches	16 inches	25 inches	200 lbs.	80.00

Our St. Lawrence is fitted regularly for two oarsmen with two pairs best quality straight spruce oars, leathered, varnished and copper tipped, and two pair polished brass oarlocks. Spoon oars may be added if desired at \$1.00 additional for each pair.



RACINE BOAT MFG. CO.  
MUSKEGON, MICH.



## OUR LIVERY BOAT

**T**HE above cut illustrates a model that for the money is far ahead of anything we know of. "Our Livery" boat is grace itself on the water, rows easily and has seating capacity for four adults, besides the oarsman, or for five children. With its square stern and beam of forty-two inches it gives ample seating capacity, which is often a necessary qualification where parties are renting boats. For the same reason it makes a desirable family boat for a summer resort where the boats are used for a short time only and remain idle the rest of the year. We build our livery boat in two grades.

**GRADE B** Length, 14 feet; beam, 42 inches; depth admidship, 24 inches. The entire frame is of selected oak. Planking of cedar, all copper fastened. Oak and ash trimmings. Nickel-plated fittings. Finished inside and out in three coats of best lead paint, the seats and gunwales being finished in the natural wood in varnish, making a very pretty contrast. "Our Livery" is fitted with one pair 7-foot ash oars, varnished, leathered and tipped; one pair oarlocks; two pair chocks, so as to permit oarsman to occupy either one of the rowing seats; stem band, painter ring, foot braces, etc. Price complete, \$45.00

**GRADE C** Same as Grade B, except planking will be of cypress and will have an open gunwale. Fastenings of steel and trimmings galvanized. Painted inside and out with three coats of lead paint and fitted same as Grade B. This grade is designed for livery purposes, being very strong and not so highly finished. Our Grade B is finished up more elaborately and is better adapted to individual use. Price, \$40.00

An additional pair of oars and oarlocks can be supplied for \$4.00 on Grade B and \$3.00 on Grade C. Rudder may be added, if wanted, for \$2.00 additional.



RACINE BOAT MFG. CO.  
MUSKEGON, MICH.



## OUR LEADER

THE BEST AND CHEAPEST BOAT IN THE WORLD FOR THE MONEY

THE above cut does not begin to do our "Leader" justice or to set forth its many superior points. Eight seasons' use of this model has demonstrated its general efficiency, and for a handy fishing boat or for livery purposes it is indispensable. Our "Leader" was designed to combine as near as possible the difficult problem of a cheap and serviceable boat. Her keel is of oak; stem, stern post, gunwales, breast hook and frame are of sound oak, free from bad knots and sap, fastened with best quality clout and wrought iron nails, properly clinched on the wood in a workmanlike manner. (All fastenings that are not screws are through fastenings carefully clinched.) Built in two sizes and one grade.

**GRADE B** Frame constructed of oak. Planking of cedar. All fittings of malleable iron, galvanized. Painter ring, stem bands. Ash oars, varnished, oiled, leathered and coppered. Painted inside and out with three coats of best lead paint. Gunwales and seats being finished in the natural wood make a very neat contrast.

Length	Beam	Depth Forward	Depth Aft	Depth Amidship	Shipping Weight	Price
15 ft.	40 inches	20½ inches	20½ inches	13½ inches	135 lbs.	\$35.00
13 ft.	40 inches	19 inches	19 inches	13 inches	115 lbs.	30.00

Our 15-foot Leader is fitted with two pair 7-foot ash oars and two pair oarlocks. Our 13 foot Leader is fitted with one pair 7-foot ash oars and one pair oarlocks.

This model contains the best results that can be procured for the price. Several carloads always on hand.



RACINE BOAT MFG. CO.  
MUSKEGON, MICH.



## CANOEING

**H**AS sprung into such prominence the past two years that a few words regarding this most enjoyable means of Boating may not be amiss. A few years ago mention *Canoe* to anyone but an experienced boatman as an adjunct to a Summer Home for family use, would make a man throw up his hands in horror and call to mind a dozen life preservers, bathing suits, parting your hair in the middle to keep from capsizing, etc. But now, "presto change" and no Summer Home is considered to be finished or complete without its *Paddlers*, and no Boat Club is considered up-to-date without its fleet of Paddlers. This popularity is deserving and is due largely to the change in design by the manufacturers, eliminating the old Indian idea of the Birch Bark proposition bringing out a graceful model with the Indian shaped prows and a good flat floor with slightly "tumbling home" sides, making a very stiff and safe model and at the same time an easy paddler—one that the ladies and children can be trusted to use with perfect safety.

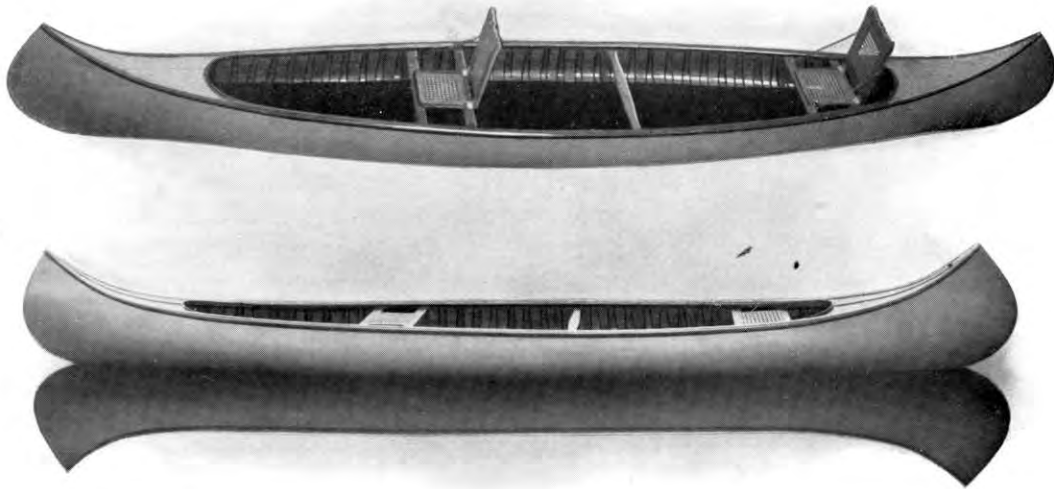
There is no more enjoyable means of Boating than that supplied with a good reliable Canoe, and this we undertake to supply in a variety of models and different finishes. The illustrations, all taken from life, show to what extent they can be used and what pleasure can be expected. For the ladies' and childrens' use we recommend our Canvas or Canadian Paddler as being safe and comfortable; for the boys, our Indian paddler is in demand.

Any of the models may be rigged with sails if desired.

Note the carrying capacity of our Canvas Paddlers and the comfort and ease with which they are propelled.



RACINE BOAT MFG. CO.  
MUSKEGON, MICH.

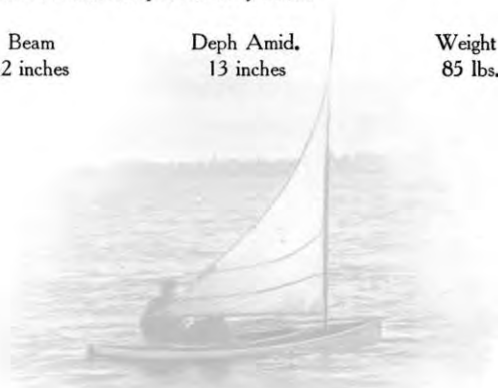


### SIXTEEN-FOOT SPECIAL CANVAS CANOE

**T**O meet the demand for a "swell" outfit in the Canoe line we have brought out this sixteen-foot Special Canvas Covered Canoe which really needs to be seen and used to be fully appreciated, as it is impossible to picture its beauty or its many fine qualities in this catalog. Try and inspect this handsome canoe at some of our salesrooms or at the factory, and you will at once agree that she is the acme of perfection in the Canoe line and that we have easily reached the limit. The model and construction are the same as given for our fourteen-foot and sixteen-foot Canvas Canoes and only differ in the finish and decking, which is entirely of *Solid Mahogany* with *Solid Mahogany* caned lazybacks and seats. Nothing finer nor better can be built, and this gem is within the reach of all.

**SPECIFICATIONS** Built of White Cedar throughout, all copper fastened. Canvas in one piece securely cemented on and thoroughly filled and finished in white or green enamel, highly polished. Gunwales, thwarts, decks, coaming, seats and backs are made from *Solid Mahogany*, highly finished. Two cane seats and folding cane backs, two single spruce paddles, velvet rug on floor makes the same complete in every detail.

Length	Beam	Deph Amid.	Weight	Price
16 feet	32 inches	13 inches	85 lbs.	\$65.00



RACINE BOAT MFG. CO.  
MUSKEGON, MICH.



### FOURTEEN-FOOT CANVAS CANOE

**T**HE illustrations herewith are taken from one of our fourteen-foot Canvas Covered Paddling Canoes that for stability, lightness and easy paddling qualities cannot be approached by any other make of Canoe on the market. This Canoe is absolutely free from leaks in any climate, will stand abuse freely and is durably and beautifully finished. This Canoe could rightly be called the white man's "Birch Bark," being built upon the same principles of the red man's "Birch Bark," having ribs of the lightest white cedar with a skin of cedar over which is stretched a covering of canvas, ironed into shellac and then coated with a waterproof paint.

**SPECIFICATIONS** Built of white cedar throughout. Ribs of white cedar in continuous lengths, steam bent. Planking securely fastened to ribs with copper nails. Stems of oak. Gunwales and breastworks of ash. Canvas cemented to outside of hull in one piece, filled and made waterproof. The inside gunwales, thwarts, etc., are finished in the natural wood with the best grade of marine varnish; the outside is painted a light green and finished in enamel gloss. One single spruce paddle varnished and copper tipped, five feet long, and two cane seats are furnished with every canoe.

Length	Beam	Depth Amid.	Depth For'd-Aft.	Weight	Price
14 feet	32 inches	12 inches	23 inches	60 lbs.	\$32.00

Corduroy seat and lazyback, cork and hair filled, nicely tufted and arranged to set on floor, \$3.50 each.



RACINE BOAT MFG. CO.  
MUSKEGON, MICH.



## SIXTEEN-FOOT CANVAS CANOE

THE cuts herewith show our 16-foot canvas covered canoe and what has already been said for our 14-foot canvas canoe applies to this model, except as to carrying capacity. The illustrations above and on page 12 show seating capacity for six persons, still leaving ample side above the water to weather a good sea. It will therefore be seen that our 16-foot canvas canoe will carry comfortably and safely 800 to 900 pounds and with this load handles readily and with ease. For hunting, fishing, cruising and moonlight excursions this canoe cannot be excelled and the pleasure to be derived from its use cannot be estimated, and we guarantee it will paddle its way into the good opinion of the most skeptical.

**SPECIFICATIONS** Built of white cedar throughout, ribs of white cedar in continuous lengths, steam bent, Planking securely fastened to ribs with copper nails. Stems of oak. Gunwales and breasthook of ash. Canvas cemented to outside of hull in one piece, filled and made waterproof. The inside gunwales, thwarts, etc., are finished in the natural wood with the best grade of marine varnish; the outside is painted a light green and finished in enamel gloss. One single spruce paddle varnished and copper tipped, five feet long, and two cane seats are furnished with every canoe.

Length	Beam	Depth Amid.	Depth For'd-Aft	Weight	Price
16 feet	32 inches	13 inches	24 inches	80 lbs.	\$35.00

Corduroy seat and lazy-back, cork and hair filled, nicely stuffed and arranged to set on floor, \$3.50 each.



RACINE BOAT MFG. CO.  
MUSKEGON, MICH.



### OUR INDIAN PADDLER

**I**F the "noble red man" could have seen and tried the canoe we illustrate at the prices we quote below, it is needless to say that he would never have taken the time and trouble to build for himself the "birch bark." The idea of turning out a first-class canoe at such a price has been a problem that has puzzled the boat builders for years. We claim to have solved the problem by the aid of special machinery and facilities for turning these canoes out in lots of one hundred at a time. We now offer, at a price within the reach of all, a well-built, handsomely-modeled paddling canoe, as illustrated above, with a good flat floor to insure stiffness, and sufficient "rocker" to make her an easy paddler. Carrying capacity about 400 pounds. No boat house should be without a fleet of Indian Paddlers.

**SPECIFICATIONS** Length, 13 feet. Beam, 28 inches. Depth, amidship, 10 inches. Depth, fore and aft, 16 inches. Weight, 45 pounds. Entire frame work is of selected White Oak; all ribs being steam bent. Planking of White Cedar, all copper fastened. Gunwales, breasthooks and two thwarts of Oak. Finished inside and out in the natural wood with the best grade of marine varnish. One single paddle, varnished and copper tipped, with each canoe. Price, \$27.00

**EXTRAS** Wood lazy-back can be added for \$1.00. Upholstered lazy-back and seat, \$3.50. Eight-foot jointed double paddle, \$4.00.

**SAILING OUTFIT** Can be fitted with sailing outfit of about 20 square feet sail area for \$6.50. Decking canoe with coaming and side deck; price, \$9.00. If side deck is not wanted, we can rig a 30-inch deck fore and aft with little coaming at each end for \$6.00.



RACINE BOAT MFG. CO.  
MUSKEGON, MICH.



### CANADIAN PADDLER

THE illustration above shows our 13-foot and the cut below the lines of our 14-foot Canadian Paddler — one of the most popular of small pleasure Boats. As its name suggests, it has been in use many years in Canadian waters for fishing, hunting, etc. The model we have brought out follows closely the lines of the American "birch bark" Canoe, but it is an improvement in that it has a wider floor, while the sides, "tumbling home," admit of an easy use of the paddle. Indeed, as it now stands, our "Canadian Paddler" represents a class of craft that is bound to grow rapidly popular. The use of the Canoe, both in England and America has developed into a distinct "fad," and a Boat House without a "Paddler" in it is manifestly short in its equipment. A glance at the cuts as shown assures the most fastidious person that considerable taste has been shown and no expense spared to make this Canoe handsomely and luxuriously comfortable. For a tete-a-tete it has no superior.

**SPECIFICATIONS** An all Cedar Canoe decked over fore and aft with coaming, with Oak ribs, Oak gunwales, and inwales stems, and coaming substantially built. Copper fastened throughout and finished inside and out in the Natural wood with best grade of varnish. One single paddle five feet long, one upholstered lazyback and seat:

Length, 13 feet	Beam, 28 inches	Price, \$ 40.00
Length, 14 feet	Beam, 30 inches	Price, 45.00
Length, 15 feet	Beam, 30 inches	Price, 50.00

RACINE BOAT MFG. CO.  
MUSKEGON, MICH.



## STILL HUNTER

**O**UR Still Hunter is one of the best duck boats ever built as thousands of sportsmen who have used them for the past twenty years will testify too. As will be seen it sets very low in the water, at the same time only draws 2 to 3 inches, and the decks have sufficient crown to make a dry boat in rough water, although this model is not intended so much for an open water boat as for marsh work. The frame work is of Oak. The planking and deck is of White Cedar. Coaming and trimmings of Oak — all securely fastened with wrought nails and screws. Built for use and abuse and not to leak. The following claims will appeal to the hunter:

First — *A Light Weight Boat.* Weighing only eighty pounds and having a carrying capacity of 600 pounds.

Second — *A Light Draught Boat.* When fairly loaded, drawing from two to three inches; in fact, as President Lincoln said of our gunboats, they will run "wherever it is a little damp."

Third — *A very Stiff Boat.* One can stand in and shoot from them with ease.

Fourth — As well adapted to fishing as hunting.

Fifth — A very still boat, a point the hunter will appreciate.

Sixth — A fast and able sailor.

**DIMENSIONS** *No. 1.* Eleven and one-half feet long; 36-inch beam; depth, 10 inches under deck; cockpit 26 inches by 6 feet. Finished in dead grass color inside and out.

Price, including paddle, floor grating and removable seat, \$20.00 *No. 2.* Thirteen feet long; 36-inch beam; depth, 10 inches under deck. Cockpit, 26 inches x 7 feet. Price, including paddle, floor grating and removable seat, \$25.00

Oarlocks and oars fitted, per pair, \$3.00 addition. Sailing outfit, fitted, \$5.00 addition as shown.

RACINE BOAT MFG. CO.  
MUSKEGON, MICH.



## RACINE HUNTING BOAT

**I**N designing and building our Racine Hunter as illustrated herewith, we have not endeavored to produce a cheap outfit, but a good one, embracing all the good points that are necessary to satisfy the experienced sportsman, and a second glance at the cuts will convince one that we have incorporated in this boat very light draft, great stability, easy lines and large carrying capacity. The boat has very little freeboard, consequently it is not affected by the wind, and is quiet. At the same time she will weather a good sea and handles very easily under the paddle or oar. A good, comfortable, dry and efficient hunting boat. Not cheap, but good.

**SPECIFICATIONS** Length, 14 feet; beam, 38 inches; depth amidship, 8 inches; depth fore and aft, 13 inches; cockpit, 8 feet long, 32 inches wide. Frame of selected white oak, light, strong and carefully riveted together. Planking of clear cedar, lap strake and securely fastened. Decks of cedar, supported on oak deck beams and covered with canvas cemented on, making a very light, strong and durable construction. Cockpit coaming of oak, steam bent and sprung in. Floor of cypress. Two removable seats. Two pair rowlock chocks. One pair removable oarlocks attached to one pair seven-foot ash oars, copper tipped. One push paddle. The entire boat is painted inside and out in a dead grass color. Price, \$30.00

Extra pair oars and oarlocks, \$3.00. Sailing outfit may be added for \$6.00.





### SIX-OAR LADIES' BARGE

**T**HE illustration appearing above is reproduced from a photograph of a six-oar barge designed and built by us for Downer College in 1894, since which time two additional barges of the same design have been purchased from us, making a fleet of three in daily use during the summer months.

### ROWING BARGES

**SPECIFICATIONS** Keel, stem, stern, gunwales and knees of selected white oak, all securely fastened with brass screws. Planking of clear cedar, lap streak, all copper fastened, with the ribs riveted on copper burrs. Fenders, top and bottom, in black walnut. Removable floor board buttoned in. Lining strips on each side of floor board extending well up on each side of boat to protect planking. All seats securely fastened to risers, and in turn are fastened to bronze seat hangers, which are fastened to gunwale and bolted through the seats proper. There is a large seat in the stern with lazy back; also seat in bow. Platforms for both seats. Adjustable foot braces for all rowing thwarts. Rudder with yoke and steering line. All trimmings are of either polished brass or nickel-plated, as may be desired, and consist of stem band, painter ring, seat braces, rudder hangers, rowlocks and sockets. The entire boat is finished up very handsomely in the natural wood throughout, with the best grade of marine varnish. The barges are fitted with the best quality of spoon oars, leathered, varnished and copper tipped, as buyers may wish. The general finish of the boat throughout is of the same character as our Princess.

	Length	Beam	Approximate Weight	Price
Four-Oared Barge . . . . .	24 feet	44 inches	250 pounds	\$135.00
Six-Oared Barge . . . . .	30 feet	46 inches	325 pounds	165.00
Eight-Oared Barge . . . . .	36 feet	48 inches	400 pounds	180.00

Flag staffs and sockets may be added forward and aft for club signals if desired, at an additional cost of \$3.00.

RACINE BOAT MFG. CO.  
MUSKEGON, MICH.



### CLUB BARGES AND GIGS

**T**HE illustrations appearing on this page are reproduced from original photographs of boats actually designed and built by us for the Ohio Boat Club at Cincinnati, Ohio. In the top cut there is shown two of our four-oared 15-foot Princess Row Boat; one six-oared Princess Row Boat; one eight-oared Barge with cockswain seat and two four-oared outriggered Working Gigs.

It has been our privilege to supply some of the leading colleges with shells, gigs, working boats and barges of different dimensions and construction to suit their individual wants and we have been supplying some of the largest Boat Clubs in this country with their requirements in the boat line for some years. Nearly all of this work is special and of course is not carried in stock, but we are at all times prepared to meet any demands that may be made upon us with dispatch.

If you are interested in this type of boat, we should be very glad to take the matter up with you to a conclusion and submit designs and estimates covering your requirements. We have the proper material on hand here for this class of work and first class artisans to complete the job and we guarantee to please. Get our prices before placing your order as we can give you a superior boat at an attractive price.

RACINE BOAT MFG. CO.  
MUSKEGON, MICH.



## YACHT'S DINGHEY

**T**HE illustrations herewith show the profile and interior of our new dinghey, designed especially for the eastern trade, and any yachtsman wanting a first-class tender, light in weight, of small dimensions, but sufficiently roomy to accommodate five persons in a pinch, and capable of making good weather in and about New York harbor, will find all of the above points incorporated in this boat.

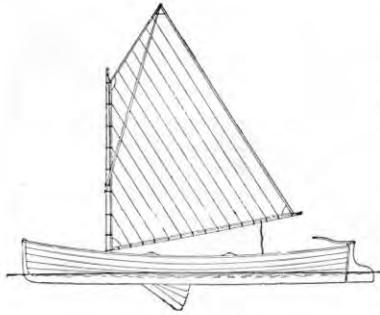
**SPECIFICATIONS** Framework of clear white oak. Ribs steam bent. Planking of clear white cedar, all copper fastened and ribs riveted on copper burrs. Walnut fenders. One rowing thwart. One large stern seat and large bow seat. Wood lazyback, polished brass stem band, polished brass seat hangers, painter ring. One pair polished gunmetal oarlocks fitted inside gunwale, one pair spruce oars, leathered, varnished and copper tipped. One cork filled, canvas covered tripod fender on bow. The entire boat is finished inside and out in the natural wood with three coats best marine varnish. Nothing better built. Price, \$55.00 Rudder and steering lines may be added for \$2.00.

Length Over All	Beam	Depth For'd	Depth Aft	Depth Amid.	Shipping Weight Crated
10 feet	46 inches	25 inches	21 inches	16 inches	130 lbs.





## COMBINED ROW AND SAIL LIVERY



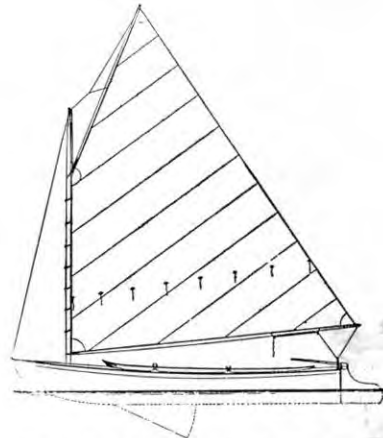
**T**HIS is our regular Livery Model, fitted out for sailing with a view to securing the most essential points required for livery purposes. *Easy rowing, great carrying capacity, lightness and strength; is suited to carry three grown persons and child with perfect safety, and will trim with either one, two or three persons.*

As this model is the outcome of years of experience in this class of work, it will be found upon trial to combine the above points better than any other heretofore put upon the market. The accompanying sail plan shows her fitted with small sprit sail, folding centerboard, rudder and tiller, and so fitted will be found a splendidly combined row and sailboat for youths and young men. It is made especially to meet the demand of the public for a safe boat at the resorts and for the boat liveries, as its name indicates.

Construction same as "Livery Model," fittings as described above, including one pair oars, leathery and copper tipped, oarlocks, etc. Price complete, Grade B, \$65.00

## COMBINED ROW AND SAIL BOAT MAJESTIC

In designing our "Majestic" we have taken great care not to sacrifice any of the good points as a rowboat, to make her a "small yacht," (as some builders have heretofore,) or sacrifice any of the good qualities as a small sailing boat to make a reasonably easy rowing craft. The object has been to get the very best combination possible under the dimensions of 16 feet length by 48 inch beam, and the large number of these boats built and sold the past six years shows that a good combination when sailing, she can be converted into a sloop by the addition of a small removable bowsprit and jib, thus making a combination in rig also, the former for ordinary sailing, the latter for taking a "spin" with a man or two perched on the weather rail in a breeze of wind, or for small boat racing. Altogether she is a desirable boat for any person desiring to break the monotony of either rowing or sailing, and own only one boat. Built in Grade "A" only. Length, 16 feet; beam, 48 inches; hackmatack stem; keel and ribs, selected oak; planking, cedar, copper fastened walnut trimmings, finished in natural wood with marine varnish and fitted with brass nickel-plated trimmings; two pair 8-foot oars—one pair spoon and one pair straight—rudder, tiller, steel centerboard. We consider her as roomy and safe a craft as can be produced for the purpose she is designed. A comfortable and handsome combination. Weight 225 pounds. Price, sloop-rigged complete, \$150.00 cat-rigged complete, \$140.00



## SMALL BOAT FITTINGS

### OARS

#### First Quality Ash Oars.

7 feet long, oiled and copper tipped, per pair.....	\$1.60
8 feet long, oiled and copper tipped, per pair.....	2.00
7 feet long, varnished, leathered and copper tipped, per pair.....	2.25
8 feet long, varnished, leathered and copper tipped, per pair.....	2.50

#### High grade, finely balanced, hand finished Spruce Oars. Nothing finer made.

7 feet long, varnished, leathered and copper tipped, per pair.....	\$3.00
8 feet long, varnished, leathered and copper tipped, per pair.....	3.50

#### Finest quality hand made Spoon Oars of selected white spruce, balanced and reinforced backs, finely finished.

7 feet long, varnished, leathered and copper tipped, per pair.....	\$4.00
8 feet long, varnished, leathered and copper tipped, per pair.....	4.50
9 feet long, varnished, leathered and copper tipped, per pair.....	5.00

#### Finest quality clear white spruce double blade Paddles, with nickel-plated brass friction joint, finely finished, copper tipped.

8 feet long, each.....	\$4.00
9 feet long, each.....	4.50

#### Single Canoe Paddle, made of selected white spruce, very light and strong, neatly varnished and copper tipped,

4 feet long, each.....	\$1.25
5 feet long, each.....	1.50
6 feet long, each.....	2.00

Brass Boat Hooks, with Pole, polished and varnished, each.....	\$2.50
Canvas Covered Cork Fenders, each.....	.75
U. S. Government Cork Life Jackets, each.....	1.50
Cork Ring Buoys, each.....	3.00
Cork Mooring Buoys.....	6.00
Upholstered Lazy Back and Seats, filled with cork, with hair tops, corduroy coverings, each....	3.50
Polished Brass Safety Oarlocks and Sockets, per pair.....	2.00
Polished Brass Safety Oarlocks only, per pair.....	1.25
Malleable Iron Safety Oarlocks and Sockets, per pair.....	.75
Malleable Iron Safety Oarlocks only, per pair.....	.50