



Racine **Wis**

TRADE MARK REG

"America's Finest Canoe"

Alexander Friedman



Racine^{Wis}
TRADE MARK REG.

"America's Finest Canoe"

Catalog 29

Racine Boat Company
Manufacturers

General Office and Factory: Racine, Wis., U. S. A.
Export Office: 52 Broadway, New York, N. Y.

Where Quality Begins

FORTY years ago when the first RACINEWIS model was placed on the market by F. W. Martin, the foundation of the RACINEWIS quality-reputation was laid. Pride in workmanship, evident in the design and fine finish of these early models, has ever since been manifested in every RACINEWIS product.

As years have passed, the RACINEWIS has been improved wherever we have found need or possibility of improvement. Every man in the organization is imbued with the one idea of making the RACINEWIS live up to its well earned name: "America's Finest Canoe."

It is this spirit that has made possible the fine product we are offering the sport loving public today. Through the practical application of this spirit in every step in the construction of RACINEWIS Canoes we are able to build canoes that are light and easy to handle and yet safe and seaworthy in cruising, running the rapids, or facing a rough sea.

Actual performance has made RACINEWIS famous all over the country. And today our greatest asset is "the steadfast endorsement of thousands of RACINEWIS users."



America's Finest Canoe

Sixteen Reasons For RacineWis

There are sixteen reasons why the RACINEWIS makes good where others fail. The professional paddler always looks for these points in buying a canoe, and we suggest that you keep them in mind and remember that they are all embodied in a RACINEWIS.



FIRST—Built in one grade only (the best possible to produce).

SECOND—All top planks are laid in marine glue besides being copper fastened.

THIRD—All planking is sponged in hot water. This eliminates any chance of splitting when being fastened to the ribs.

FOURTH—The thwarts can be moved to meet your individual requirements.

FIFTH—Extra center thwart with thumb nuts.



SIXTH—The number of tacks in each planking, one in the center and two at each edge, giving strength and rigidity.

SEVENTH—Gunwales riveted thru planking and ribs.

EIGHTH—Gunwales riveted thru stems.

NINTH—All fastenings copper and brass.

TENTH—Hot boiled oil on the planking insures long life and proof against moisture and decay.

ELEVENTH—Seats arranged to be raised or lowered.

TWELFTH—The canvas is put on in one piece.

THIRTEENTH—Singeing the canvas before filling adds greatly to the smooth outside surface.

FOURTEENTH—We use our own special filler in the canvas treatment.

FIFTEENTH—Built by skilled mechanics on straight day labor, insuring superior construction.

SIXTEENTH—Each model supplied with outside stems, keel, seats, thwarts, stem bands and open gunwales.

The above points, together with many other interesting features regarding RACINEWIS construction, will be found in the general specifications on the next page.

America's Finest Canoe

How RacineWis Canoes Are Made

If you could visit us and take a trip through the various departments of our well regulated plant you would find many things of real interest. When your RACINEWIS is delivered and you look at its graceful lines and fine finish, you will take pride in your possession but unless you have seen it in actual construction you can hardly appreciate the many hours of labor and painstaking care that underlie and make possible its beauty and dependability.

The first step in producing the RACINEWIS is the design, accurately and scientifically laid out to assure balance, seaworthiness and speed. From this design a form is made, a sort of mold, upon which the canoe is built. The design and the form are of vital importance. Unless these are correct in every line the finished canoe, no matter how carefully it is made, will reflect and emphasize the imperfections. The graceful lines, the perfect balance, the remarkable ease in handling, and the speed you find in RACINEWIS canoes are evidence of the infinite care that has been taken in preparing the original RACINEWIS designs and forms.

And now, before we go further in following through the making of a canoe, let us go out to the lumber sheds to inspect the piles of various kinds of woods used in the construction of RACINEWIS canoes. Here we find pile after pile of the finest choice Michigan Cedar, Oregon Cedar, White Oak, Maple and Mahogany arranged according to different degrees of seasoning. Every piece of wood used in manufacturing RACINEWIS canoes is thoroughly seasoned and carefully selected. No flaws of any kind are permitted in the planks, ribs, thwarts or gunwales.

When the lumber is taken from the shed it is cut into strips of various lengths, carefully inspected and then is planed and sanded and is ready to be built into the canoe.

First the ribs, cut from clear, selected white cedar, are fashioned to the form under steam. This assures exact conformity to the original design and prevents all possibility of splitting or warping. After the ribs have been set they are sanded and then the planking, cut from Northern White Cedar, is laid on the ribs after being sanded and sponged with hot water. The application of hot cloths to the planking is very important for in this way only can the planks be fitted closely to the ribs. The planking is fastened to the ribs with copper tacks and in addition the top planks are laid in marine glue. After the planks have set they are thoroughly sanded to assure a smooth, even surface. Then the entire hull is treated to a coat of hot linseed oil. This hot oil soaks into the wood and prevents decay.



The Wooden Shell Showing the Long Length Planks in RacineWis Construction.

America's Finest Canoe

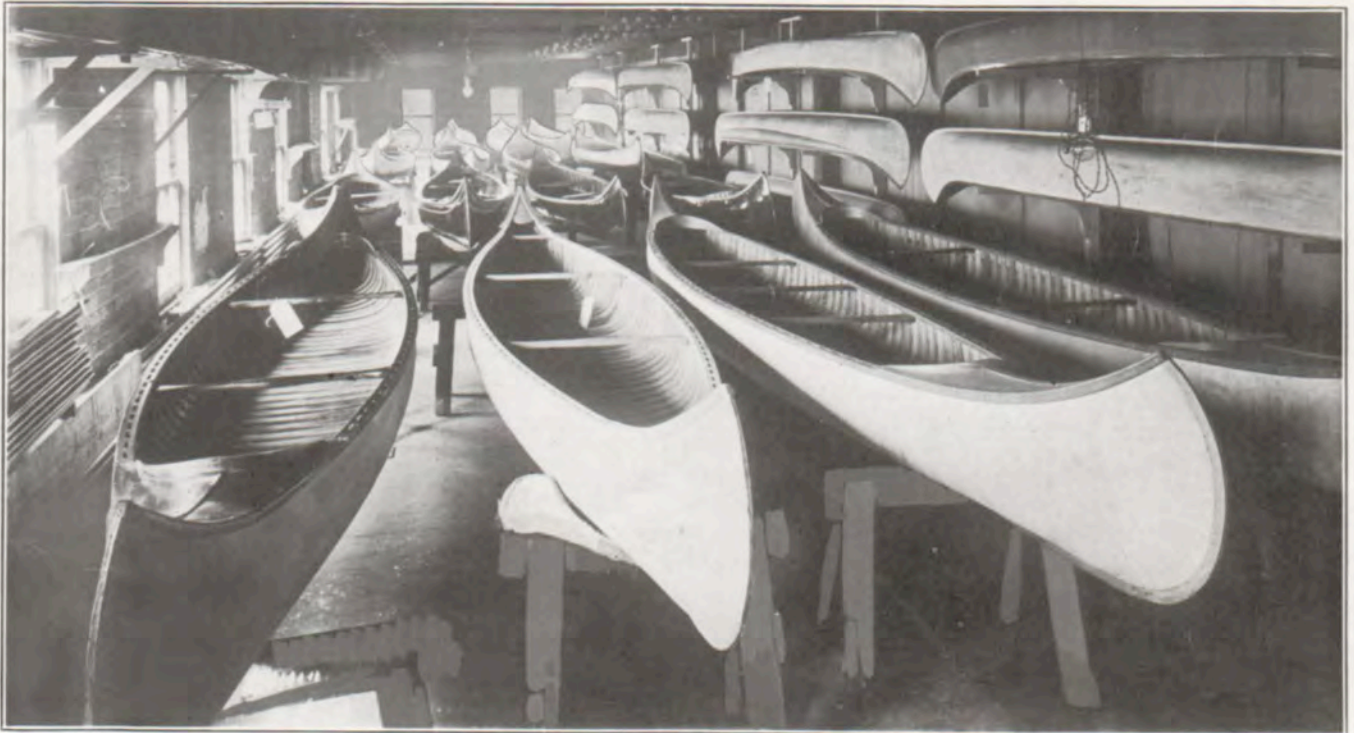
Now we are ready for the canvasing. There is a decided knack in laying the canvas on the hull and a special man, who is expert at this, stretches this canvas to just the proper degree of tightness and then fastens it at top and ends with copper tacks. Mile after mile of canvas is used during the year in RACINEWIS canoes.

Before any filler is applied to the canvas it is singed. This singeing serves two purposes. First it removes the fine linty surface and gives a smooth, even surface for painting, and in addition it helps to set the canvas more firmly to the planking.

After this the canvased hull is given three separate coats of our own special filler. Each coat of filler is thoroughly dried and hand rubbed before the next is applied. This gives an absolutely smooth foundation for the two coats of color paint and three coats of best spar varnish that give RACINEWIS that highly polished, piano finish so much admired.

Each step of the work, from the time the first plank is laid until the canoe is ready for shipment, is carefully checked by an experienced inspector so that every RACINEWIS is as perfect as it is possible to make a canoe.

This accounts for the standard of quality maintained in RACINEWIS canoes and the constant satisfaction of RACINEWIS owners.



In the Paint Shop—the Final Step in RacineWis Perfection.

America's Finest Canoe

General Specifications

PLANKING—All RACINEWIS canoes are planked with clear Wisconsin or Michigan white cedar of the very best grade. This cedar is much lighter and stronger than Eastern cedar. The planking is $\frac{5}{16}$ " in thickness, put on in long lengths, smoothly laid with square joints. The planking is thoroly sanded before and after being put on, besides being sponged in hot water which eliminates any chance of splitting. The top plank is laid in marine glue besides being copper fastened.

RIBS—The ribs are made from clear, selected white cedar and are $\frac{5}{16}$ " in thickness and 2" wide. The ribs are thoroly sanded before and after being placed. The edges are neatly rounded. The spacing is close, giving strength and rigidity. The stems and keel are made of selected white oak.

GUNWALES—Special attention is given to the gunwales as they are a big factor in the general appearance of the canoe. For this we use Oregon white cedar in the Chippewa and Seneca. The Navajo is mahogany. The Oregon cedar is an especially white wood and takes a most beautiful finish. The gunwales are in one full length and copper riveted together thru the planking and ribs, besides being riveted at each end thru the stems.

THWARTS—We regularly furnish two thwarts with each canoe and when desired will furnish a center thwart with thumb nuts. All thwarts are removable and your ideas as to arrangement will be carried out exactly. If no instructions are received we place the thwarts as follows: The first one 1' 8" forward of the after seat (this gives plenty of leg room), the other placed 5" aft of the forward seat. Almost everyone has different ideas regarding thwart arrangement, so when ordering let us know your requirements.

FASTENINGS—All fastenings in the RACINEWIS are copper and brass. The planking is fastened to the ribs with copper tacks. One tack in the center and two tacks at each edge of every plank in each rib, well clinched on the inside. The keel is fastened with brass screws, the gunwales copper riveted, and the stem bands brass screw fastened.

SEATS—Our standard canoe seats are hand caned and built to stand up under hard usage. The frames are oak, mahogany or maple, to match the model selected. These seats are 4" below the gunwale but can be raised or lowered as desired.

PRESERVATION—The oiling of the hull is a very important factor in RACINEWIS canoes. The outside of the hull is treated to a coat of hot linseed oil before the canvas is put on. This prevents decay and by having the oil hot it strikes well into the wood.

CANVASING—The canvas, which is of special heavy, close weave made especially for this purpose, is put on in one piece, stretched tightly over the hull and thoroly fastened at the top and ends with copper tacks.

We use No. 8 close weave seamless canvas of the very best grade.

CANVAS TREATMENT—The canvas is first singed and then treated to three coats of our own special filler. Ample time is given between the coats for drying. This filler is hand rubbed after each coat so as to produce an absolutely smooth surface. This gives the backing to the beautiful outside finish besides giving long life and good wearing qualities to the canvas.

FINISH—Two coats of flat color paint constitute the next treatment. After these have thoroly dried, the canoe receives three coats of the best spar varnish hand rubbed after each coat, bringing

GENERAL SPECIFICATIONS—Continued

the surface to a regular piano finish. The interior, gunwales, decks, seats and thwarts are finished in the natural wood with three coats of spar varnish.

COLORS—We aim to carry in stock all RACINEWIS models finished in dark green, battleship gray and light yellow. Any special shade desired will be furnished to order without extra charge. A color card will be furnished on request. On special colors allow seven days additional for delivery.

EQUIPMENT—Each RACINEWIS model is complete with two thwarts (these are removable), two caned seats, and oak keel 1" x 1". Outside stems and stem bands. Extra center thwart when desired; open gunwales.

PACKING AND CRATING—Our canoes are shipped packed in straw and burlap, for which there is no extra charge. If a crate is desired the extra charge is \$4.00.

LABOR—Our regular force of skilled mechanics necessary to complete every portion of the work is employed thruout the year. Our men work on straight day labor and are well paid thus insuring the best of construction.

ACCESSORIES AND CAMPING EQUIPMENT—Special attention is called to pages 18 to 32, illustrating and describing our line of accessories and camp equipment. Every item carries our guarantee of quality, and our stock being very complete we can give prompt shipment on any of these listed. In case you desire any special equipment not listed in this catalog we will be glad to build it or get it for you at a reasonable cost.

MODELS—The RACINEWIS canoes are offered in three models—Chippewa, Seneca and Navajo. Each is designed to fill an individual canoe want.

ORDERING—In ordering be sure and give the model, length, and color of canoe, together with full shipping directions so that there will be no chance for a delay in delivery.

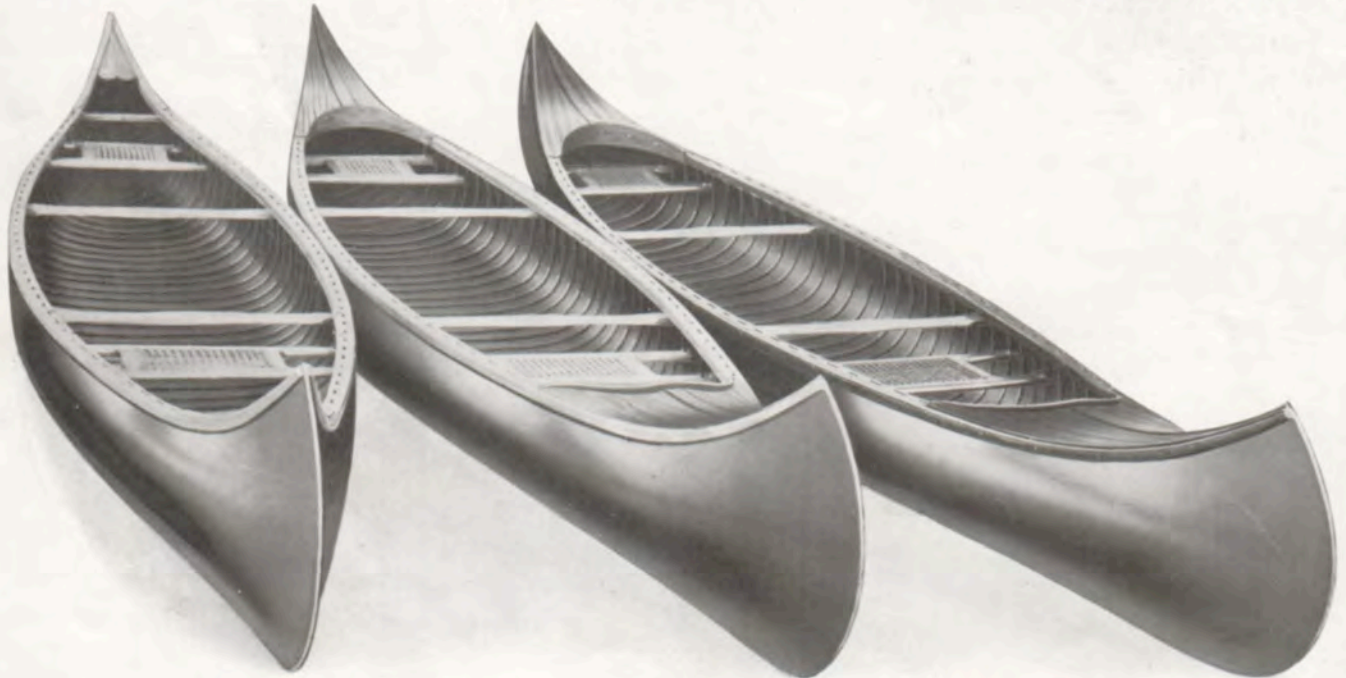


The RacineWis is the Lightest Canoe—Consistent with Strength—Possible to Build.

America's Finest Canoe

Ask Any RacineWis Owner They All Boost For RacineWis

- My RACINEWIS canoes are beauties. _____ Port Royal, S. C.
JOHN J. TIES,
U. S. Naval Disciplinary Barracks.
- I certainly am well pleased with my RACINEWIS canoes. They are all you recommend them to be. _____ The Weirs, N. H.
H. H. BUFFUM,
Seattle, Wash.
- Highly pleased with my RACINEWIS. _____ J. SORENSON,
Sally Canoe Club.
Roanoke, Va.
- The RACINEWIS is the finest canoe on the market today. _____ J. C. JOHNSON, Jr.,
809 Henry St., S. W.
- My RACINEWIS is better than any canoe I have ever used. _____ Milwaukee, Wis.
FRED HASS,
Laf-a-lot Canoe Club.
Philadelphia, Pa.
- I would have no other than a RACINEWIS canoe. _____ WILLIAM F. TOMLIN,
2946 N. Bailey St.
Birmingham, Mich.
- My 17-foot RACINEWIS Seneca is the fastest canoe I ever paddled. _____ EARLE C. BARR.
- I use my RACINEWIS Chippewa Model in places where fellows with Sponson canoes do not venture, and have had four years of the best service from this canoe. _____ Wilmington, Del.
J. J. MAYERS,
1611 Grant Ave.
Belle Fourche, S. D.
- I certainly am well pleased with my RACINEWIS. _____ JOHN CLAY,
Louisville, Ky.
- We are more than satisfied with our RACINEWIS. _____ MISS JESSIE ARMSTRONG,
Calson Canoe Club.
Covington, La.
- My RACINEWIS has proved very satisfactory and I am more than pleased. _____ CHAS. P. McCAMM,
Omaha, Nebr.
- My RACINEWIS is perfect in every respect. _____ G. L. SIMMONS,
Savannah, Ga.
- I am sure well pleased with my RACINEWIS. _____ G. C. SCHWARTZ,
So. Paris, Me.
- I am more than pleased with my RACINEWIS. _____ W. L. GRAY,
Mobile, Ala.
- My RACINEWIS is perfect. _____ ARTHUR L. MERRICK.



Chippewa Model
Description on Pages 10 and 11

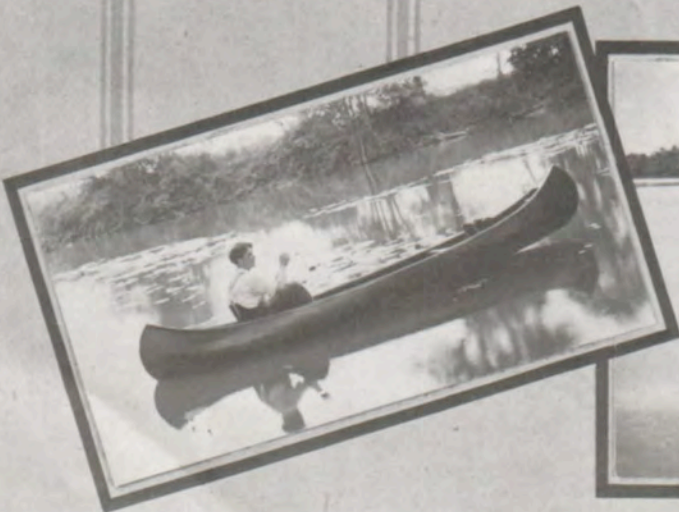
Seneca Model
Description on Pages 12 and 13

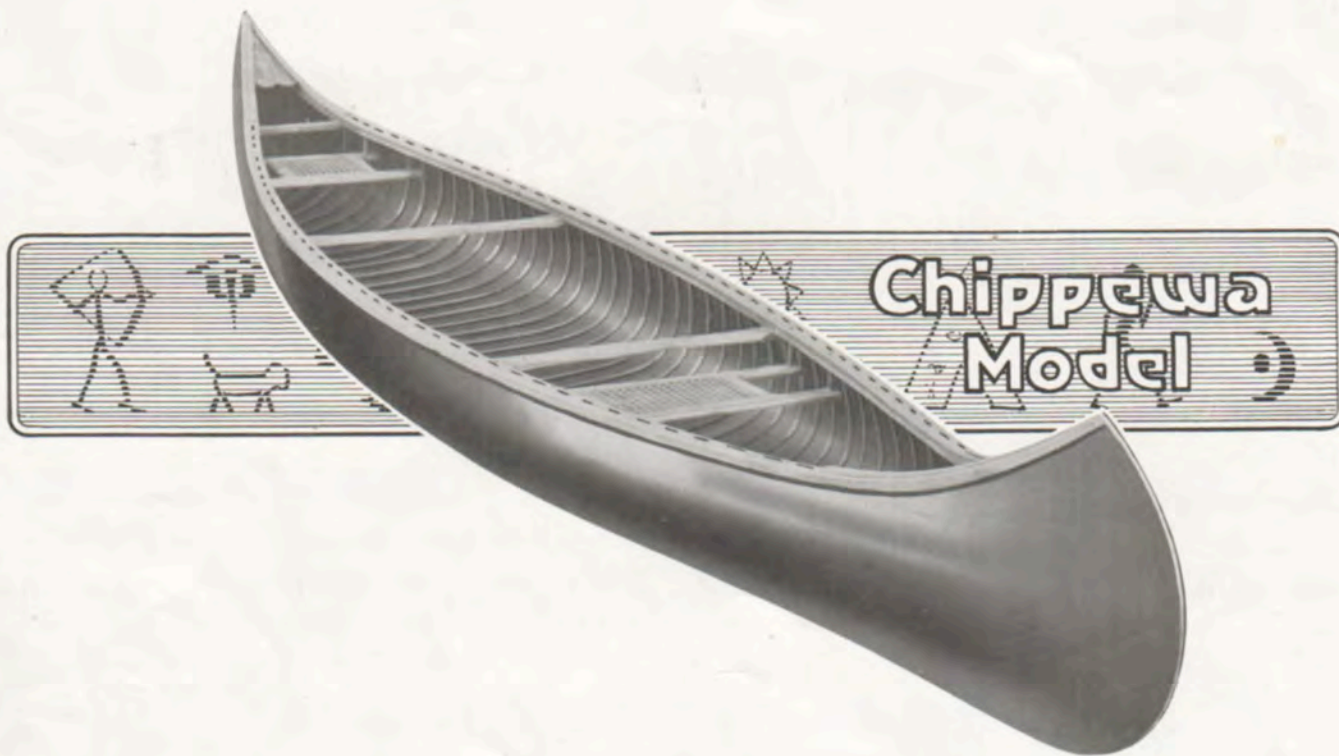
Navajo Model
Description on Pages 14 and 15

America's Finest Canoe



Once a
Racine^{wis}
Always a Racine^{wis}

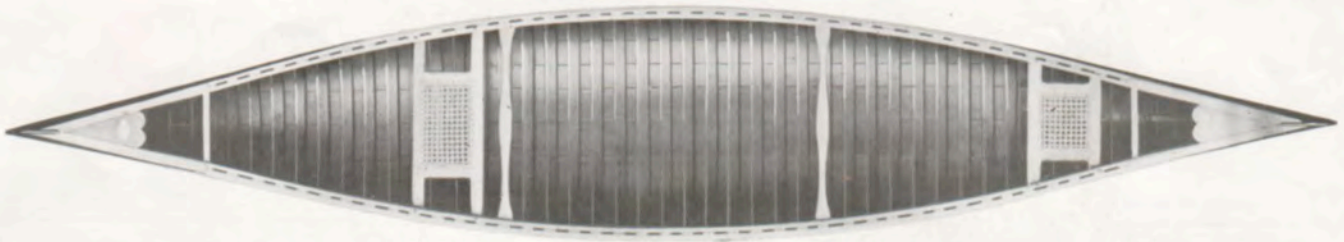




OUR Chippewa Model is designed for speed, seaworthiness, and ease in handling. The floor is quite flat, giving minimum draft. The sides have good bilge and a little fullness at the bow and stern makes it a wonderful canoe in rough water. These essential features, together with its lightness and ease in handling, make it a canoe that will meet practically every requirement, and we recommend this model for cruising, camping, and all around canoe purposes. One particular quality of the Chippewa is its speed. The lightness and graceful lines make it respond with ease and quickness to every stroke of the paddle, and a large number of Chippewa owners won first place in last season's races. The distinctive features of RACINEWIS construction are worked out with painstaking care, and you are assured of the highest degree of perfection in workmanship, material and finish. The Chippewa has made friends wherever used, and is a canoe that will give the fullest amount of enjoyment and pleasure. The standard thwart arrangement is given in the general specifications on page six, but if you have any special arrangement please specify same when ordering, so the thwarts can be placed exactly as you wish them. There is no extra charge for special color but we request that sample be sent with order. Our stock colors are dark green, light yellow and battleship gray. During the rush season, if quick shipment is desired,

For prices see separate price list.

America's Finest Canoe

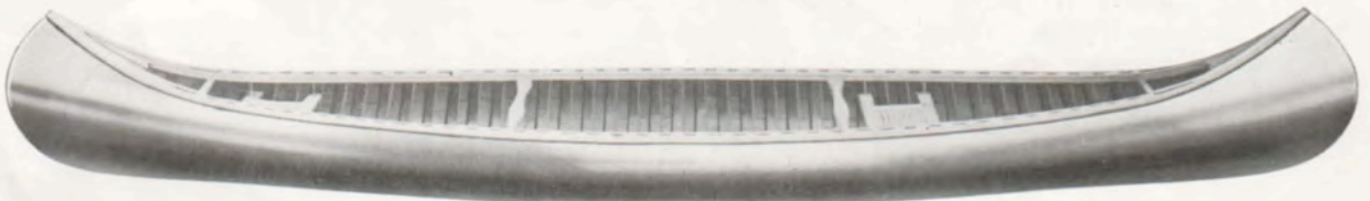


it is well to give second color choice. For stripings, monograms, etc., see page eighteen. All of the details of construction will be found in the general specifications on pages six and seven, and we ask that you read these pages very carefully. The Chippewa is an all around canoe in every sense of the word, built to serve every requirement on a long cruise, a speedy craft, beautifully finished and will satisfy the most exacting paddler. We offer the Chippewa in four sizes, equipped with thwarts, two caned seats, brass stem bands, outside stems and keel.

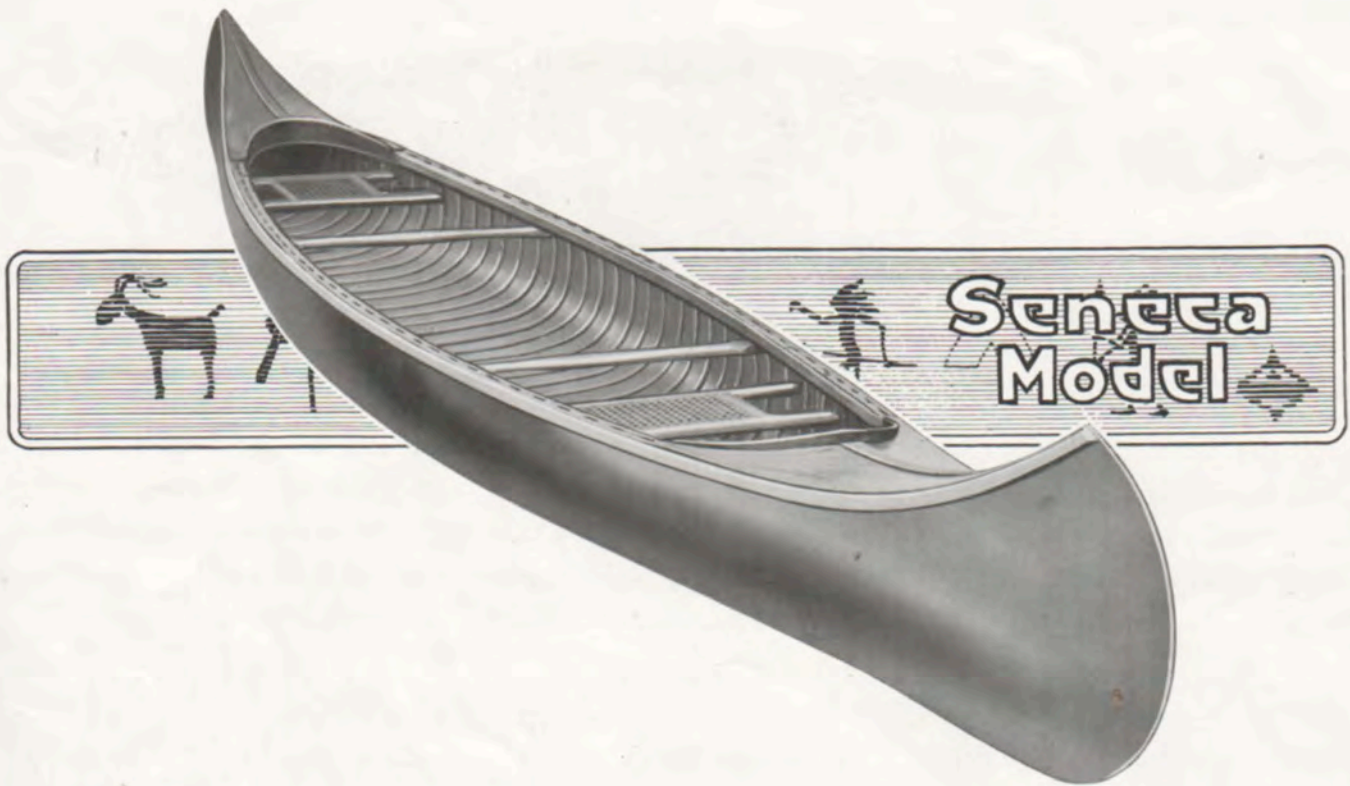
LENGTH	BEAM	DEPTH FORWARD	DEPTH AFT	DEPTH AMIDSHIP	AVERAGE WEIGHT
15 ft.	32 in.	23 in.	23 in.	12 in.	53 lbs.
16 ft.	34 in.	24 in.	24 in.	13 in.	62 lbs.
17 ft.	34 in.	25 in.	25 in.	13 in.	69 lbs.
18 ft.	34 in.	25 in.	25 in.	13 in.	76 lbs.

No extra charge for Open Gunwales

For prices see separate price list.



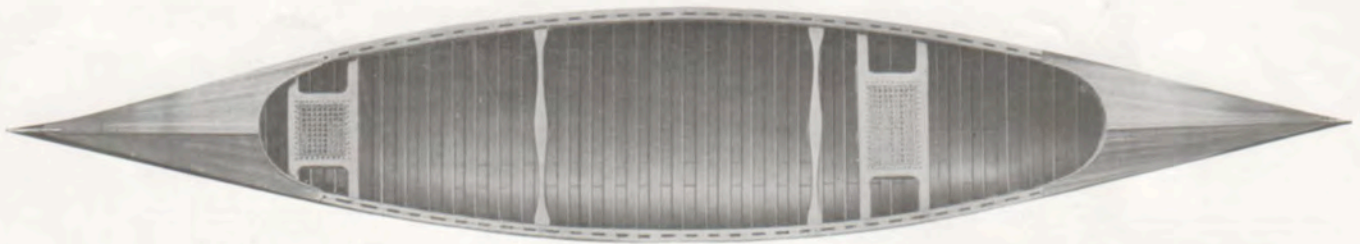
America's Finest Canoe



IN our RACINEWIS Seneca Model canoe we have combined to a remarkable degree the essentials of easy action and seaworthiness with gracefulness and beautiful finish. The decks are 30" clear white cedar with light oak covering board. The Seneca Model has a trifle more draft than the Chippewa and, of course, is of more weight but not too heavy for portaging. It makes an ideal canoe for cruising, is very strong, with decks providing for dry storage, and a canoe that will satisfy the most fastidious paddler in every way, when it comes to rapids, fast water or paddling in a head wind. It is a fast canoe and will carry a great deal of weight. A great many Senecas are used on the larger lakes and their performance in rough water has been a revelation. The standard thwart arrangement is as follows: The first thwart is placed 1' 8" forward of the after seat. The other 4' ahead of the first thwart. Your ideas regarding thwart arrangement will be carried out exactly, so please specify same when ordering. Stock colors, dark green, battleship gray, and light yellow. While we carry these canoes in stock we advise that, during the rush season, you give second color choice if you are in a hurry for the canoe. There is no extra charge for special color, but samples should be sent with the order. For stripings, monograms, etc., see page eighteen. In

For prices see separate price list.

America's Finest Canoe



order that you may know all of the details regarding the construction and finish of the Seneca you should read pages six and seven which give the complete specifications. Every detail in workmanship is of the very best and the finish is beyond reproach. Aside from the beautiful lines and finish, the Seneca is a canoe built to "stand the test" and give you the fullest amount of service and satisfaction. Hundreds of canoeists vouch for the Seneca. This model comes in four sizes as listed below, equipped with thwarts, two caned seats, brass stem bands, outside stems, keel and 30" decks.

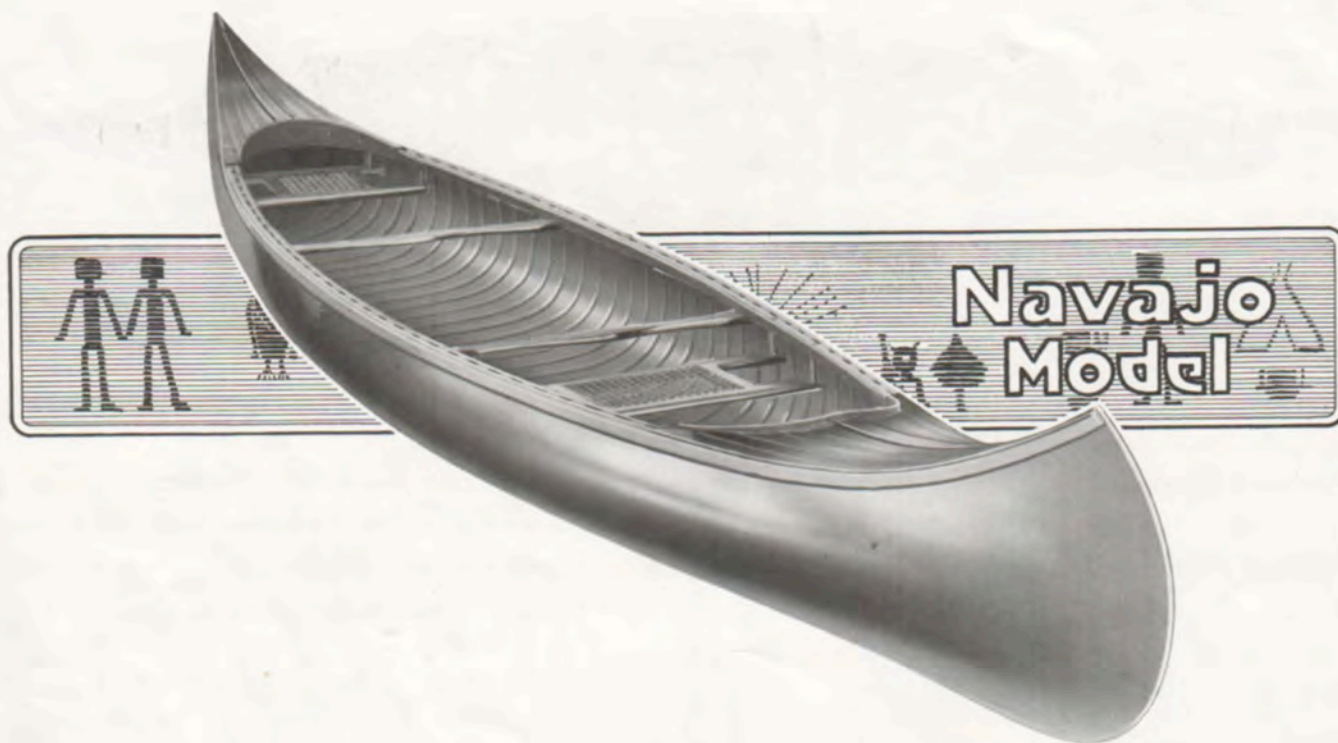
LENGTH	BEAM	DEPTH FORWARD	DEPTH AFT	DEPTH AMIDSHIP	DECKS	AVERAGE WEIGHT
15 ft.	32 in.	23 in.	23 in.	12 in.	30 in.	59 lbs.
16 ft.	34 in.	24 in.	24 in.	13 in.	30 in.	67 lbs.
17 ft.	34 in.	25 in.	25 in.	13 in.	30 in.	73 lbs.
18 ft.	34 in.	25 in.	25 in.	13 in.	30 in.	79 lbs.

No extra charge for Open Gunwales

For prices see separate price list.



America's Finest Canoe



PERHAPS the most interesting of the RACINEWIS models is the Navajo which has lines similar to the Chippewa. The 30" mahogany decks, together with mahogany thwarts, seats, and gunwales and beautiful outside finish, are all that the eye for the distinctive and artistic could wish for. Of course, we have embodied all of the practical features—such as easy paddling qualities, steadiness and lines—but in addition there are certain refinements which can only be expected in a canoe of this kind. The mahogany is matched with painstaking care and every detail is worked out to the finest degree. The outside is given the closest attention so that this RACINEWIS canoe is all one could expect in a de luxe model. It is a canoe without a peer in style, class and finish. The Navajo is extremely dry in rough water and has great carrying capacity. All of the RACINEWIS distinctive features are embodied in this model and it will satisfy the most critical canoeist. The arrangement of the two thwarts in the Navajo will be the same as in the Seneca as stated on page twelve, unless otherwise ordered. We aim to carry the different lengths in stock finished in dark green, battleship gray and light yellow.

For prices see separate price list.

America's Finest Canoe

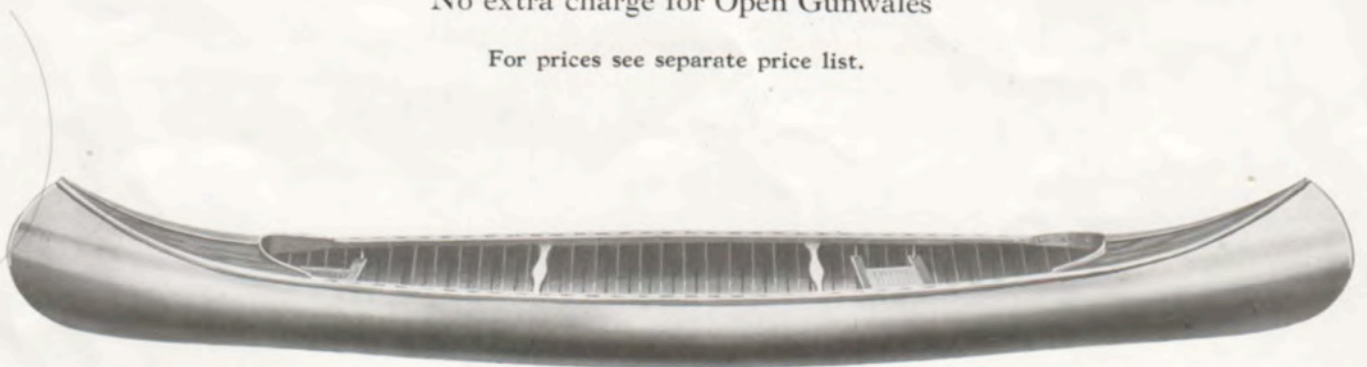


For color we suggest a light shade so as to contrast with the dark, rich mahogany. There is no extra charge for special color but samples should be sent with the order. For stripings, monograms etc., see page eighteen. The details of construction and finish of the Navajo are thoroly covered in the specifications on pages six and seven. The two seats and thwarts furnished with this model are of genuine mahogany to match decks and gunwales. The Navajo is built to meet the demand of the most exacting purchaser and has proven to be a very popular model. We offer the Navajo in four sizes, equipped with thwarts, two caned seats, brass stem bands, outside stems, keel and 30" decks.

LENGTH	BEAM	DEPTH FORWARD	DEPTH AFT	DEPTH AMIDSHIP	DECKS	AVERAGE WEIGHT
15 ft.	32 in.	23 in.	23 in.	12 in.	30 in.	64 lbs.
16 ft.	34 in.	24 in.	24 in.	13 in.	30 in.	71 lbs.
17 ft.	34 in.	25 in.	25 in.	13 in.	30 in.	79 lbs.
18 ft.	34 in.	25 in.	25 in.	13 in.	30 in.	85 lbs.

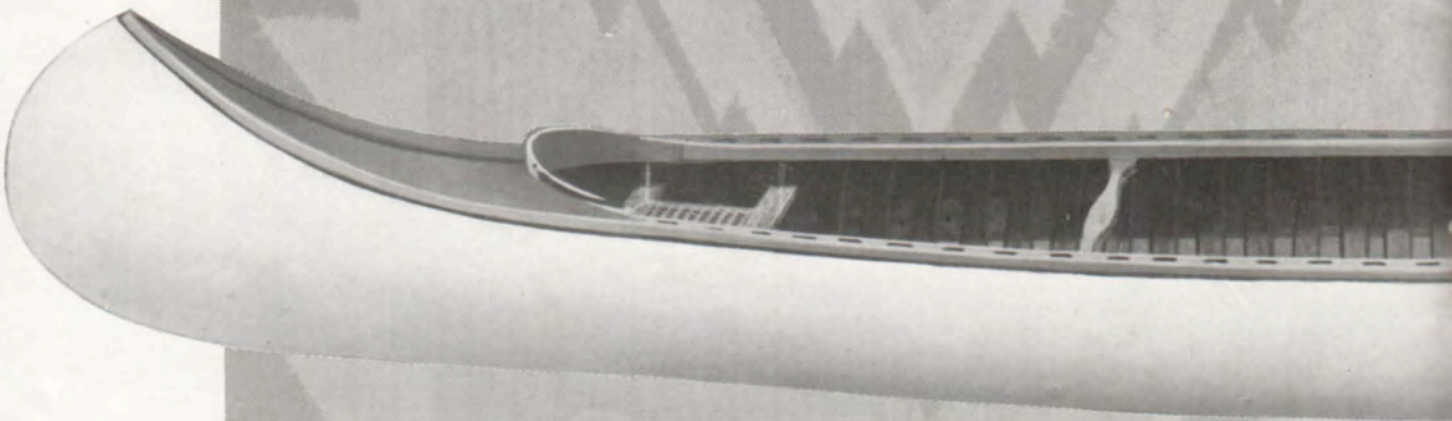
No extra charge for Open Gunwales

For prices see separate price list.



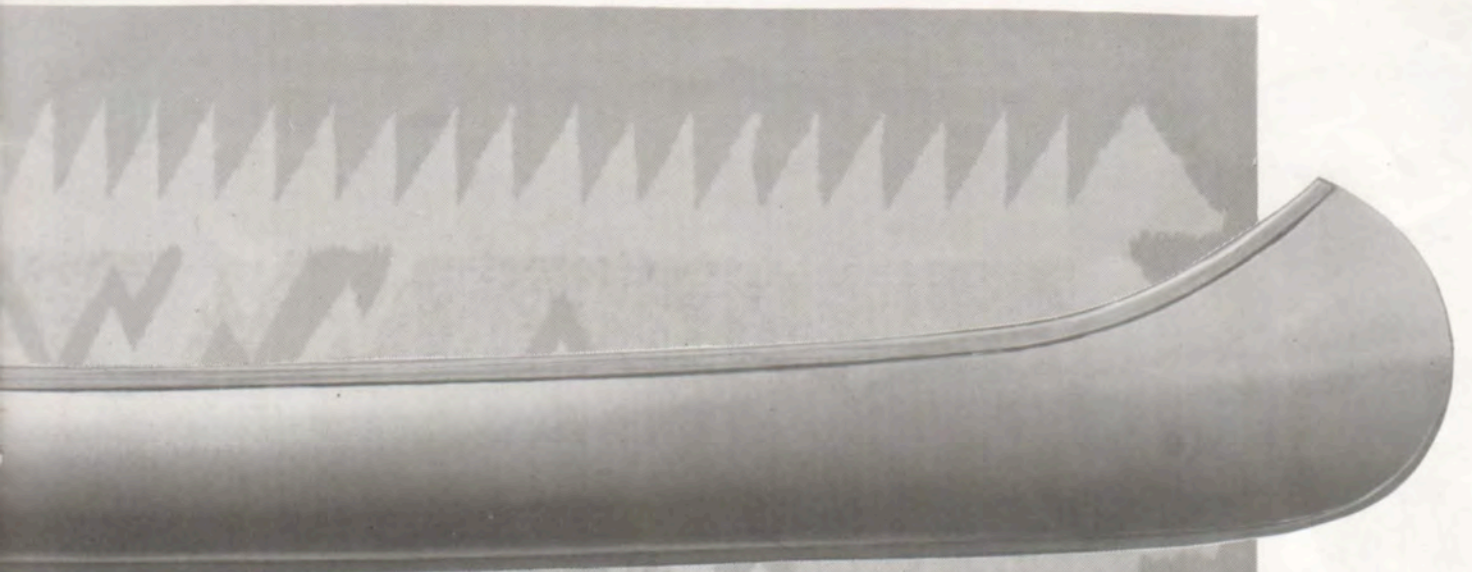
America's Finest Canoe

Racinewis

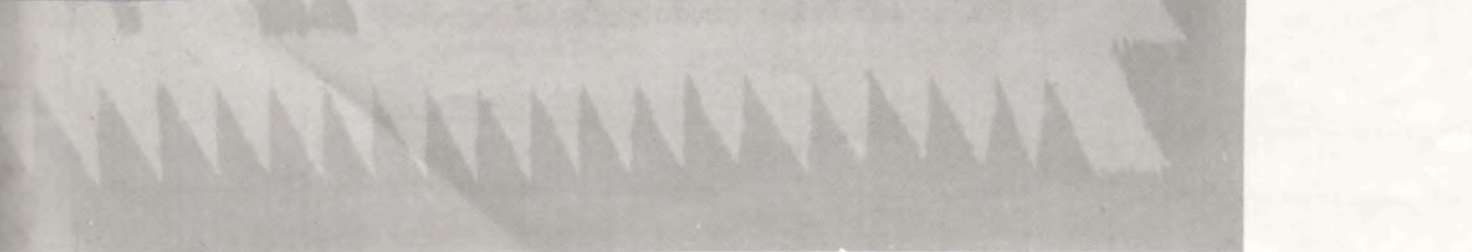


Racine
"America's Best"

Racine(wis



ne(wis
"Finest Canoe"





COLORS, NAMES, MONOGRAMS and STRIPING



OUR stock colors are Dark Green, Light Yellow and Battleship Gray. We will furnish any special color without additional cost and will send color card on request. If you have a particular shade send sample and we will match it exactly. (Allow seven days for special work.)



In lettering names or monograms, our custom is to place it on left bow and right stern, unless otherwise ordered. A 2½-inch letter is regularly used in names and a 4-inch letter in monograms. If you have a special monogram or club letter, a sketch should be furnished for copy. (Allow three days for monogram or stripe.)



Striping is becoming very popular.
 Single initial letters in gold or color.
 Names in gold or color regular lettering.
 Special lettering, 2-inch to 4-inch letters, gold or color.



Monogram in gold or colors:
 Two letters on one side of canoe.
 Two letters on two sides of canoe.
 Three letters on one side of canoe.
 Three letters on two sides of canoe.



Gold or color stripe, ½-inch to 4-inch.
 Gold or color stripe, edged, ½-inch to 4-inch.
 Gold or color stripe with turned down ends, ½-inch to 4-inch.



For prices see separate price list.



Proper Striping Emphasizes the Charm of a Beautiful Canoe.

America's Finest Canoe



Sponsons

WE furnish any of our models with sponsons. The name sponson means air chambers, built out on each side and extending from stem to stern, as shown in the above illustration. These sponsons are constructed the same as the canoe. The cross section forms which divide the sponson into separate compartments are made of oak with substantial frame work of wood covered with canvas. Each separate compartment is absolutely water tight. The entire sponson is covered by a one piece canvas, laid in white lead, making it absolutely water tight. Our sponsons are finished the same as the canoe and are of graceful lines, tapering at each end, giving the complete canoe a very attractive appearance. We recommend sponsons where a canoe is likely to be used by children, or in rough water, or the installation of a motor. We do not carry in stock these sponsons but build them to order only. (Allow two weeks for building).

For prices see separate price list.



America's Finest Canoe



*The Racine^{wis}
A Live
Canoe
for
The Live
Paddler*



Special
Equipment
for
Camp
or
Cruise

America's Finest Canoe

Racine^{wis}



K-2. Slatted Chair

This chair is of good depth, has stationary back, is copper fastened and finished in the natural wood with spar varnish. A good, strong, serviceable chair and will prove a valuable addition to your canoe equipment.



K-3. Slatted Chair with adjustable back

Copper fastened, finished in the natural wood with spar varnish. This is a very comfortable chair and exceedingly attractive in appearance.



K-4. Wicker Canoe Seat with adjustable back

Made of strong, flexible wicker, finished with waterproof varnish. Recommended to those who desire something especially nice.



Ease and luxury combined to the highest degree in a Navajo.



K-5. Wicker Back Rest

A very light and comfortable back rest of flexible wicker, waterproofed. Stylish in appearance and very popular.



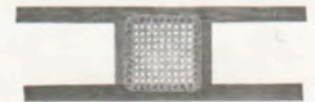
K-6. Life Preserver Pillow

Pillows 16" x 16", made of pantasote Spanish leather, filled with best quality silk floss, neatly edged with handles. Very light and serviceable.



K-7. Slatted Back Rest

Unusually neat in appearance. Single width 15 inches. Double width 30 inches.



K-8. Standard Canoe Seat

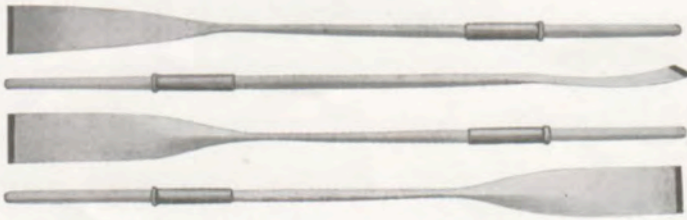
This seat is thoroughly well made and very strong, with hand caned bottom.

K-9. Canoe Thwart

Made of selected material, hand finished. Varnished with spar.

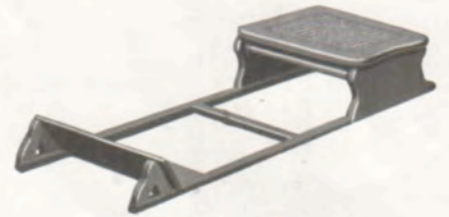
For prices see separate price list.

America's Finest Canoe



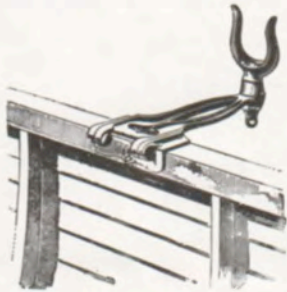
K-10. Oars

We supply only first quality spruce oars; oiled, leathered, varnished and copper tipped; in all lengths.



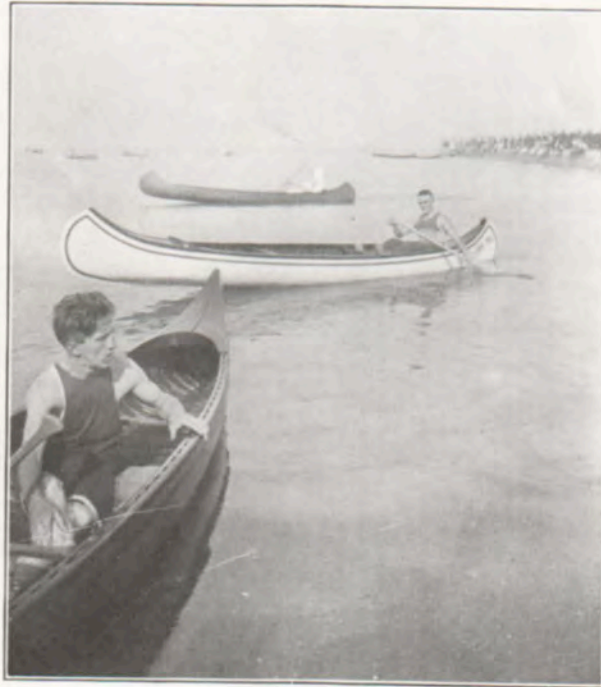
K-11. Rowing Stool

Our rowing stool with foot brace is of very neat appearance, strong and serviceable.



K-12. Folding Outrigger Oar Locks

Galvanized and Polished Brass.



RacineWis Canoes Dot the Shores of Most Lakes.



K-13. Paddles

We offer only first quality spruce in 5 ft.; 5 ft. 6 in.; and 6 ft. lengths.



K-14. Oar Locks and Sockets

Galvanized and Polished Brass.



K-15. Copper Tips

We furnish copper tips for paddles complete with tacks.



K-16. Double Paddles

First quality spruce with nickel joint in 8 ft., 9 ft. and 9½ ft. lengths.



K-17. Rubber Drip Cups

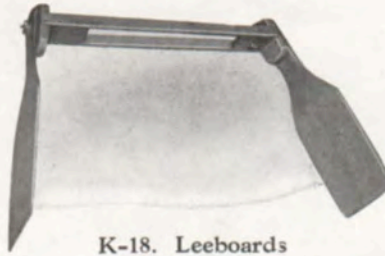
For use with double paddles.

For prices see separate price list.

America's Finest Canoe

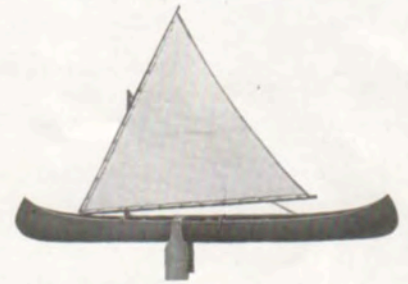


The Chippewa is Used Extensively on the Great Lakes.



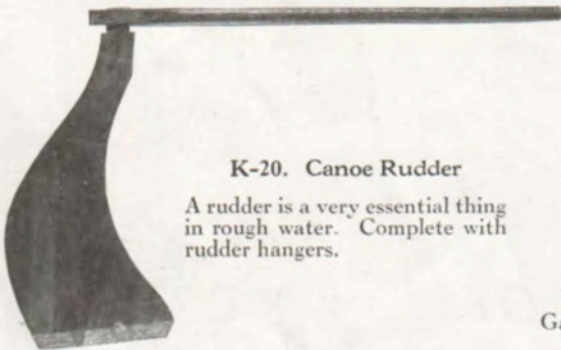
K-18. Leeboards

These leeboards are made adjustable and will fit any canoe. The fins are banded with copper. They are made to stand the test.



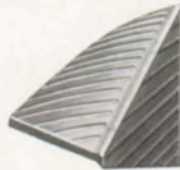
K-19. Sailing Outfit

This is the complete outfit consisting of sail-mast with block, spar, boom with jaw, mast step, mast bar, sail ropes, cleats and leeboards with copper bands. Best of materials and built strictly for service. Our price list gives complete information and prices on sailing equipment.



K-20. Canoe Rudder

A rudder is a very essential thing in rough water. Complete with rudder hangers.



K-21. Air Tank

Galvanized. Copper.



The Chippewa Model is a Great Sailer.



K-23. Carrying Yoke.



K-22. Floor Rack



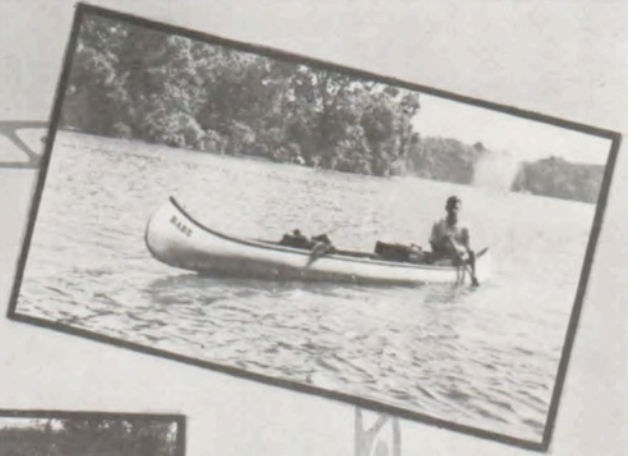
K-24. Chippewa Model showing Half Rib Construction.

For prices see separate price list.



Skimming Along in a Navajo.

America's Finest Canoe



*All Waters
In the Union
Know
Racine(wis)*





FLAGS and POLES

K-25. Canoe pennant with name or monogram, hand sewed and best wool bunting, 12" x 18".
U. S. Ensign or American Flag, best wool bunting, 12" x 18".
Canoe Flag Pole, 3 ft.



Imitation Indians—but a Real Canoe.



K-29. Quick Repair Outfit

Our RACINEWIS Quick Repair Outfit consists of white lead and japan, color and varnish, tacks sandpaper, and pieces of canvas.

A FEW EXTRACTS FROM LETTERS FROM RacineWis OWNERS.

Columbus, Ohio.

For my personal use I prefer a RACINEWIS to any which I have ever had.
P. D. PARKINSON,
Physical Director,
Capitol University.

Chicago, Ill.

My RACINEWIS is certainly a "pippin."
C. J. SHURTLEFF,
Optimate Canoe Club.

San Diego, Cal.

I am glad to give my best recommendation of your RACINEWIS Canoe.
J. ORDWAY WEBSTER

Newark, N. J.

My RACINEWIS is giving excellent satisfaction and has won the admiration of all.
MISS LAURA B. ASH.

Goshen, Ind.

My RACINEWIS has had five years of hard service and is in fine condition yet.
W. R. ALSPACH.

Sioux City, Ia.

As fine a canoe as it is possible to build.
COMMODORE C. N. MARTIN,
Council Oaks Club.

Minneapolis, Minn.

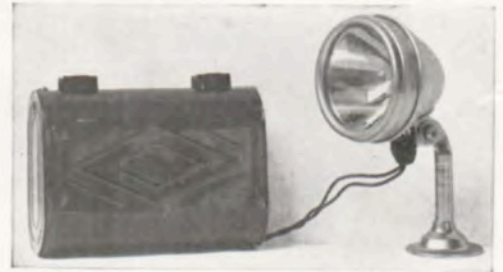
My RACINEWIS is a beauty and I am thoroughly pleased.
R. H. CHESKY,
Smalley Canoe Club.



K-30. Marine Glue for Emergency Repairs.

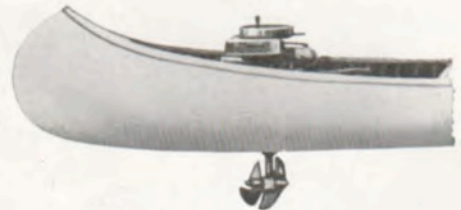


K-26. Polished Brass Flag Pole Sockets.



K-27. Canoe Searchlight

Nickel plated, with bulb, deck fixture, swivel base and water tight battery case.



K-28. Motor Installation

Well, thwart, and reinforcement for canoe motor.



"Going Some" in a RacineWis Seneca equipped with Canoe Motor.

For prices see separate price list.

America's Finest Canoe



*Canoe Clubs
Everywhere
Choose
Racine@wis*



What Shall I Take?

By FREDERICK FOSTER

EDITOR'S NOTE: Mr. Foster is an experienced canoeist whose business and pleasure has taken him to many "out-of-the-way places" of North America. He has hiked over mountain trails from Northern British Columbia to Southern Mexico and canoed the lakes and streams of three countries. We thought a hint from him on what to take on a canoe trip might be of value to RACINEWIS owners.



A Handy Water Tight Match Box.



A Good Compass for Cruise and Camp.



A Cot That Folds Compactly and is Built for Hard Service.

"When I first began going into the big out-doors my chief difficulty was in taking too much with me instead of too little. When one is away from civilization for days, or maybe weeks, it is astonishing how few of the seemingly indispensable home necessities are really needed. Try hiking over a mountain trail with a fifty pound pack on your back and see how quickly you will conclude that there are a lot of things in the pack that you don't need. On the other hand there is danger of taking too little and an extra ounce or pound judiciously chosen may repay you many times for the trouble it gave. In making a trip either over the trail or by canoe, what I take is determined by the length of the journey and whether it is through a well settled or uninhabited country. If the journey is to be through a well settled country so few if any supplies are taken, the problem is too simple for discussion here, but should your trip lead you into a country where man is almost a stranger, then too great care cannot be taken in outfitting. For a canoe trip into such a country my outfit would consist of: A Camp Combination Blanket, the best. I prefer these to any sleeping bag although they are slightly heavier than some very good bags. If you prefer the sleeping bag, I suggest one of light, waterproof silk, padded with eiderdown. A RACINEWIS Combination Cot and Tent, which is easily and quickly set up and which turns the rain and also protects one from flies, mosquitoes and other insects.

"My clothing consists of light underwear, wool hosiery, Mackinaw trousers, wool shirt, heavy sweater and a Mackinaw Coat if cold or wet weather is likely to be encountered. A good pair of Canoe Moccasins, two or three pairs for long trips, are essential. A felt hat completes my wardrobe. You will be repaid by taking extra underwear, hosiery and shirts with you.

The Articles Illustrated can be Purchased from Any Reliable Sporting Goods or Hardware Dealer.

America's Finest Canoe

"About two and a half pounds of food per day per man should be taken. The essentials are Flour (about a pound a day per man; the Hudson Bay Company allows two pounds), Rice, Bacon, Canned Tomatoes, de-hydrated Onions. (These four cooked together make an excellent stew—chop the bacon fine). Steamed Rice for supper and enough left over to fry for breakfast is excellent. Prunes and raisins should always be taken. Tea, salt, pepper, sugar, baking powder, turned butter, evaporated milk are all necessities; Bouillon Cubes and Erbswurst—especially the latter—are excellent. Small pots of jellies and jams may be included. Take 10 cents worth of citric acid and add a pinch of it to your tea or wherever lemon is desired. Game and fish, of course, are procured on the trip.



A Good Canteen for General Service.

"I use a complete cooking outfit and always carry a compass, watertight match box, good knife, light axe, a 22-calibre "Game Getter" gun, and a folding water pail.

"The above, together with a few minor essentials determined by one's individual likes or requirements, is sufficient. Keep your "grub" dry in a watertight bag—not a duffle bag where everything you want is at the bottom when you want it, but a bag which folds similar to an envelope."



A Light Compact Camp Stool.

Special Canoe Equipment

- | | |
|--|---|
| K-31. Painter ring | K-46. Shaft log with shaft hole bored for inboard motor |
| K-32. Copper stem band drilled and with fastenings | K-47. Repainting and revarnishing thruout |
| K-33. Brass bang plate along Keel | K-48. Repainting and revarnishing Sponson canoe |
| K-34. Iron bang plate along Keel | K-49. Recanvassing and refinishing thruout, regular canoe |
| K-35. Mahogany gunwale thwarts and seats on Chippewa Model | K-50. Recanvassing and refinishing Sponson thruout |
| K-36. Mahogany decks, gunwales, thwarts and seat on Seneca Model | K-51. Building Sponson on old canoe |
| K-37. 30" Cedar decks on Chippewa Model | K-52. Canoe carrier with 18" oak wheels with welded iron tires and 1/2" iron axle |
| K-38. 42" Cedar decks on Seneca Model | K-53. Seat hangers |
| K-39. 42" Mahogany decks on Navajo Model | K-54. Wide Keel 2 1/4" to 4" for motor installation |
| K-40. 48" Cedar decks on Seneca Model | K-55. Crating canoe besides packing in straw and burlap |
| K-41. 48" Mahogany decks on Navajo Model | K-56. Crating Sponson canoe besides packing in straw and burlap |
| K-42. 60" Mahogany decks on Navajo Model | K-57. Boxing for export |
| K-43. Bilge Keels, one on each side of center Keel, per pair | K-58. Spray hook made of khaki extending back 5" with auto fasteners and ridge pole |
| K-44. Carpet for bottom of canoe, per running foot | K-59. Thwarts 5" wide |
| K-45. Close weave canoe canvas 52" wide per running foot | |

For prices see separate price list.

America's Finest Canoe



*In Camp —
On Cruise
It's Racine^{wis}
They Choose*



The Proper Care of a Canoe

By reading the description of how RACINEWIS canoes are made and also from our specifications, you have learned that while the RACINEWIS is built for sturdy service, nevertheless it is a very fine piece of work worthy of thought and care in its use and handling. With the proper care, a RACINEWIS canoe should last a life time. Of course, there may be accidents that you cannot prevent that will in some way injure your canoe, but there are many preventable "canoe sins" that are indulged in by some canoeists without realization of what harm they do to the canoe.

Never drag a canoe over the beach when taking it out of the water. The sharp edges of stones, sticks and sand act like a file or a knife on the finish, and in time may even reach the canvas.

Always **lift** the canoe out of the water as shown in the illustration to the right above. This requires little effort and will add seasons to the life of your canoe.

Keep the canoe under cover when out of the water. If this is not possible, turn it upside down in some dry spot. This is especially important at night.

Never sit on the side or bottom of the canoe when you have it out of water. This creates an unnecessary strain which in time will weaken the structure.

When the canoe is left in the water, so fix it that waves cannot bump it around against logs or rocks.

At the end of each season give the outside of the canoe a thin coat of vaseline. This prevents checking and keeps the paint in good condition.



The Right Way To Lift a Canoe From the Water.



K-60
Special Canvas Filler



K-61
Special Color Coat



K-62
Special Canoe Varnish

When ordering any of the above be sure to specify color desired. Send sample if possible. We will send color card on request.

Just before the season starts go over the canoe carefully with canoe paint and varnish of the best grade. This not only restores the color but gives further protection to woodwork and canvas.

Treat your canoe with respect. It will repay you in service.

America's Finest Canoe

Testimonial Letters

My RACINEWIS has given seven years continuous service and still is as sound as a drum.

St. Louis, Mo.
W. J. MATTESON
3414 McKean St.

My RACINEWIS canoe is perfect in all respects and I am delighted.

Schenectady, N. Y.
J. S. LANDON.

The RACINEWIS canoes have certainly "delivered the goods."

Portland, Ore.
FRANKLIN CHADBOURNE,
Pacific Canoe Club.

My RACINEWIS has them all beat.

Waco, Texas.
C. E. SNELL.

My RACINEWIS has given perfect satisfaction.

Butte, Mont.
W. McWHITE.

I certainly am well pleased with my RACINEWIS.

Topeka, Kans.
C. E. BUHRE.

It would please you to see my RACINEWIS pass all the others.

Palm Beach, Fla.
GEO. W. GRAY.

My RACINEWIS is certainly a wonder.

Memphis, Tenn.
JOHN H. BRADLEY.

GUARANTEE

We guarantee every RACINEWIS canoe, canoe accessory, and camp equipment to be first class in workmanship, material and finish. If found to be other than exactly as described in this catalog your money will be cheerfully returned. The guarantee of this catalog has been written by our customers, and the endorsement of thousands of RACINEWIS users is the only real guarantee and no promise that we can write is half as strong as their word. This guarantee does not apply to replacements made necessary by abuse or neglect on the part of the customer.

TERMS

If your dealer cannot supply you with a RACINEWIS, your order will be filled direct from the factory. Regardless of financial standing or rating our terms are alike to all— one-fourth purchase price with order, balance covered by draft attached to bill of lading. To avoid delays many customers prefer sending full purchase price with order. On all shipments outside of United States we require one-half purchase price with the order. All prices f. o. b. Racine, Wisconsin.

We urge all purchasers of RACINEWIS Canoes to assure themselves of the genuine by our trade mark, shown in facsimile at the top of the page. This trade mark is on the bow deck of every genuine RACINEWIS Canoe, and the only way to avoid the substitution of an inferior canoe is to insist on this trade mark. REMEMBER the name RACINEWIS is in itself a guarantee of quality and service.

America's Finest Canoe

Price List K

Racine^{Wis} CANOES and ACCESSORIES

RACINE BOAT COMPANY

RACINE, WISCONSIN, U. S. A.

APPLYING TO CATALOG No. 29

Page One—Title
 Page Two—Introduction
 Page Three—Distinctive features
 Page Four—How "RacineWis" canoes are made
 Page Five—How "RacineWis" canoes are made
 Page Six—General specifications
 Page Seven—General specifications
 Page Eight—Recommendations
 Page Nine—Group Picture
 Pages Ten and Eleven—Chippewa Model

Length	Price	Length	Price
15 ft.	\$ 75.00	17 ft.	\$81.00
16 ft.	78.00	18 ft.	84.00

No extra charge for open gunwales
 Pages Twelve and Thirteen—Seneca Model

Length	Price	Length	Price
15 ft.	\$81.00	17 ft.	\$87.00
16 ft.	84.00	18 ft.	90.00

No extra charge for open gunwales
 Pages Fourteen and Fifteen—Navajo Model

Length	Price	Length	Price
15 ft.	\$87.00	17 ft.	\$93.00
16 ft.	90.00	18 ft.	96.00

No extra charges for open gunwales
 Pages Sixteen and Seventeen—Double page illustration
 Page Eighteen—Colors, names, monograms and stripings:

- Single initial letters in gold or color, each..... \$ 1.60
- Names in gold or color, regular lettering, per letter..... .20
- Minimum charge per side..... 1.75
- Special lettering, 2-inch to 4-inch letters, gold or colors (per letter)..... .35
- Minimum charge per side..... 2.00
- Monogram in gold or colors:—
- Two letters on one side of canoe..... 3.00
- Two letters on two sides of canoe..... 4.00
- Three letters on one side of canoe..... 4.00
- Three letters on two sides of canoe..... 5.50
- Gold or color stripe, 1/2 inch to 4-inch..... 3.50
- Gold or color stripe, edged, 1/2 inch to 4-inch..... 4.00
- Gold or color stripe with turned down ends, 1/2 inch to 4-inch..... 4.50
- Fancy stripe Greek Model..... 6.00
- Special stripes on application.....

Page Nineteen—

- K 1. Sponsons built on any model..... 20.00
- Rub rails extra. Mahogany..... 4.00
- Oak..... 3.00

Page Twenty—Group picture
 Page Twenty-one—Title Page
 Page Twenty-two—

- K 2. Slatted Chair Oak..... 2.50
- Mahogany..... 3.00
- K 3. Slatted Chair with adjustable back
- Oak..... 3.50
- Mahogany..... 4.00
- K 4. Wicker Canoe seat with adjustable back..... 7.00
- K 5. Wicker back rest..... 3.00
- K 6. Life preserver pillow..... 2.00

Page Twenty-two—

- K 7. Slatted back rest, single width, Oak..... \$ 1.25
- double width, Oak..... 1.50
- Single width, Mahogany..... 1.75
- Double width, Mahogany..... 2.00
- K 8. Standard Canoe Seat Oak..... 2.00
- Mahogany..... 2.50
- K 9. Canoe Thwart Oak..... 1.00
- Mahogany..... 1.25

Page Twenty-three—

- K 10. Oars
- Straight oars with copper tips 6' to 8' long, per foot..... .30
- Spoon oars with copper tips, per foot..... .60
- K 11. Rowing stool Oak..... 4.00
- Mahogany..... 5.00
- K 12. Folding outrigger oar locks galvanized, per pair..... 4.00
- Polished brass, per pair..... 12.00
- K 13. Paddles:—
- 4' 4 1/2" 5' and 6' lengths, 6" blade, each..... 2.00
- 4' 4 1/2" 5' and 6' lengths, 7" blade, each..... 2.25
- 4' 4 1/2" 5' and 6' lengths, 8" blade, each..... 2.50
- K 14. Oar locks and sockets, Galvanized, per pair..... .90
- Polished brass, per pair..... 3.50

- K 15. Copper tips for paddles, each..... .30
- K 16. Double paddles, pair..... 6.00
- K 17. Rubber drip cups, pair..... .80

Page Twenty-four—

- K 18. Leeboards, for regular canoe, per pair..... 7.00
- for Sponson, per pair..... 8.00
- K 19. Sailing Outfit
- Mast seat and step installed in place of bow seat..... 2.00
- Mast seat and step separate from canoe..... 3.00
- Lateen sail complete with mast and booms, area 45 sq. ft..... 16.00
- Lateen sail as above, 55 sq. ft..... 19.00
- Lateen sail as above, 65 sq. ft..... 23.00
- Canoe rudder, see K-20
- Leeboards, see K-18
- K 20. Canoe Rudder..... 3.50
- K 21. Air Tanks, Galvanized, per pair..... 8.00
- Copper, per pair..... 12.00
- K 22. Floor rack, any length..... 2.00
- K 23. Carrying yoke..... 4.00
- K 24. Half ribs, in any model..... 4.00

Page Twenty-five—Group Picture
 Page Twenty-six—

- K 25. Flags and Poles
- Canoe pennant with name and monogram..... \$ 2.50
- U. S. Ensign or American Flag..... 2.50
- Mahogany flag pole..... .80
- Nickel plated flag pole and socket of neat design..... 1.00
- K 26. Polished brass flag pole sockets, each..... .60
- K 27. Canoe searchlight with battery case..... 5.00
- K 28. Motor installation..... 10.00
- (This means labor of installing an inboard engine in canoe and includes piping and foundation.)
- K 29. Quick repair outfit..... 2.00
- K 30. Marine Glue, each..... .60

Page Twenty-seven—Group picture
 Page Twenty-eight—"What shall I take?" (Article on camping.)
 SPECIAL EQUIPMENT.

Page Twenty-nine—

- K 31. Painter ring, each..... .60
- K 32. Copper stem band, drilled, and with fastening, each..... .80
- K 33. Brass bang plate along keel..... 2.50
- K 34. Iron bang plate along keel..... 1.50
- K 35. Mahogany gunwales, thwarts and seats on Chippewa model..... 6.00
- K 36. Mahogany decks, seats, thwarts and gunwales on Seneca model..... 6.00
- K 37. 30" Cedar decks on Chippewa model..... 5.00
- K 38. 42" Cedar decks on Seneca model..... 5.00
- K 39. 42" Mahogany decks on Navajo model..... 5.00
- K 40. 48" Cedar decks on Seneca model..... 7.00
- K 41. 48" Mahogany decks on Navajo model..... 9.00
- K 42. 60" Mahogany decks on Navajo model..... 15.00
- K 43. Bilge Keels, one on each side of center keel, per pair..... 4.00
- K 44. Carpet for bottom of canoe, per running foot..... .80
- K 45. Close weave canoe canvas, 52" wide per running ft..... .80
- K 46. Shaft log with hole bored for inboard motor..... 7.00
- K 47. Repainting and revarnishing throughout..... 18.00
- K 48. Repainting and revarnishing Sponson canoe..... 23.00
- K 49. Recanvassing and refinishing throughout regular canoe..... 30.00
- K 50. Recanvassing and refinishing Sponson canoe throughout..... 37.00
- K 51. Building sponson on old canoe..... 24.00
- K 52. Canoe carrier with 18" oak wheels with welded iron tires and 1/2" iron axle..... 7.00

Page Twenty-nine—

- K 53. Seat hangers, for four..... \$.75
- K 54. Wide keel, 2 1/4" to 4" for motor installation..... 3.50
- K 55. Crating canoe besides packing in straw and burlap..... 4.00
- K 56. Crating Sponson canoe, besides packing in straw and burlap..... 5.00
- Boxing for export..... 10.50
- K 57. Spray hood made of khaki extending back 5' with auto fasteners and ridge pole..... 8.00
- K 59. Thwarts 5" wide Oak..... 1.50
- Mahogany..... 1.75

Page Thirty—Group picture
 Page Thirty-one—

- K 60. Canvas canoe filler for filling pores of canvas, per pt..... 1.00
- K 61. Special color coat, per pt..... 1.00
- K 62. Special canoe varnish, per pt..... 1.00

Page Thirty-two—Guarantee and Terms

ALL PRICES F. O. B. RACINE, WISCONSIN

RACINE BOAT COMPANY

RACINE, WISCONSIN, U. S. A.